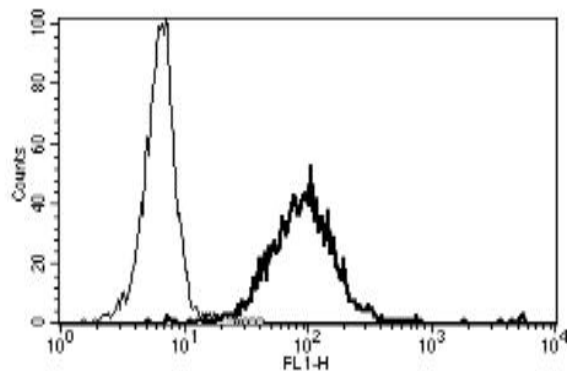


MME

Mouse Anti-Human CD10 Clone B-E3 Azide Free mAb

Catalog No.	CDM143	Quantity:	200 µg
Alternate Names:	CALLA, CD10, NEP, SFE, membrane metallo-endopeptidase		
Description:	<p>Mouse Anti-Human CD10 Clone B-E3 Azide Free monoclonal antibody.</p> <p>CD10 is an important cell surface marker in the diagnosis of human acute lymphocytic leukemia (ALL). It is present on leukemic cells of pre-B phenotype, which represent 85% of cases of ALL.</p>		
Concentration:	1 mg/ml		
Gene ID:	4311		
Hybridoma:	Myeloma X63/AG.8653 x BALB/c spleen cells		
Specificity:	Recognises the Common Acute Lymphoblastic Leukemia Antigen (CALLA), a 100 kDa protein		
Host:	Mouse		
Immunogen:	Daudi and Raji cell lines		
Isotype:	IgG2a		
Clone:	B-E3		
Formulation:	Phosphate-buffered saline. Sterile-filtered through 0.22 µm and treated to remove endotoxins. Carrier and preservative free.		
Purification:	Ion exchange chromatography		
Applications:	<p>Flow Cytometry</p> <p>Cytotoxic with rabbit complement on CD10+ cells</p> <p>Immunohistochemistry</p>		
Application Notes:	<p>For FC, use 10 µl to label 10⁶ cells or 100 µl of whole blood.</p> <p>For IHC, dilute 1:50.</p>		
Storage & Stability:	Stable at 2-8°C for 12 months. For longer storage, freeze aliquots. Avoid repeated freeze-thaw cycles.		

A typical staining pattern with the B-E3 monoclonal antibody of granulocytes



cellsciences.com

NOT FOR HUMAN USE. FOR RESEARCH ONLY. NOT FOR DIAGNOSTIC OR THERAPEUTIC USE.



Cell Sciences®
65 Parker Street
Unit 11
Newburyport, MA 01950

Toll Free: 888-769-1246
Phone: 978-572-1070
Fax: 978-992-0298

E-mail: info@cellsciences.com
Website: www.cellsciences.com