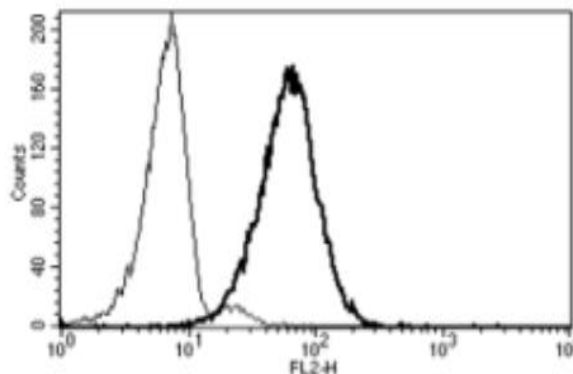


## MME

### Mouse Anti-Human CD10 Clone B-E3 PE mAb

<b>Catalog No.</b>	CDM144	<b>Quantity:</b>	100 tests
<b>Alternate Names:</b>	CALLA, CD10, NEP, SFE, membrane metallo-endopeptidase		
<b>Description:</b>	Mouse Anti-Human CD10 Clone B-E3 PE monoclonal antibody.		
<b>Concentration:</b>	100 tests / 1 ml		
<b>Gene ID:</b>	4311		
<b>Hybridoma:</b>	Myeloma X63/AG.8653 x BALB/c spleen cells		
<b>Specificity:</b>	Recognises the Common Acute Lymphoblastic Leukemia Antigen (CALLA), a 100 kDa protein		
<b>Host:</b>	Mouse		
<b>Immunogen:</b>	Daudi and Raji cell lines		
<b>Isotype:</b>	IgG2a		
<b>Clone:</b>	B-E3		
<b>Conjugate:</b>	PE		
<b>Formulation:</b>	Lyophilized from a PBS solution with 1% BSA and 0.1% sodium azide. Precaution: Sodium azide is a poisonous and hazardous substance.		
<b>Purification:</b>	Ion exchange chromatography		
<b>Reconstitution:</b>	Reconstitute with 1 ml deionized water.		
<b>Applications:</b>	Flow Cytometry.		
<b>Application Notes:</b>	Use 10 µl to label 10 <sup>6</sup> cells or 100 µl of whole blood.		
<b>Storage &amp; Stability:</b>	Stable at 2-8°C for 6 months after reconstitution. <b>Do Not Freeze.</b>		

A typical staining pattern with the B-E3 monoclonal antibody of granulocytes



**NOT FOR HUMAN USE. FOR RESEARCH ONLY. NOT FOR DIAGNOSTIC OR THERAPEUTIC USE.**

