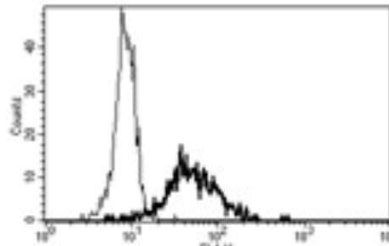


ANPEP

Mouse Anti-Human CD13/ANPEP Clone B-F10 FITC mAb

Catalog No.	CDM147	Quantity:	100 tests
Alternate Names:	APN, CD13, LAP1, PEPN, gp150, p150, aminopeptidase M, membrane alanine aminopeptidase, alanyl (membrane) aminopeptidase		
Description:	Mouse Anti-Human CD13/Aminopeptidase N Clone B-F10 FITC mAb. Aminopeptidase N is located in the small-intestinal and renal microvillar membrane, and also in other plasma membranes.		
Gene ID:	290		
Hybridoma:	Myeloma X63/AG.8653 x BALB/c spleen cells.		
Specificity:	Recognizes the aminopeptidase N, a 150-170 kDa protein		
Host:	Mouse		
Immunogen:	KG-1 cells		
Isotype:	IgG1		
Clone:	B-F10		
Conjugate:	FITC		
Formulation:	PBS + 5 % BSA + 0.1 % sodium azide. Precaution: Sodium azide is a poisonous and hazardous substance which should be handled by trained staff only.		
Purification:	Ion exchange chromatography		
Applications:	Flow cytometry		
Application Notes:	Use 10 µl to label 10 ⁶ cells or 100 µl of whole blood		
Storage & Stability:	Stable at 2-4°C for 12 months. For longer storage, freeze aliquots.		

A typical staining pattern with the B-F10 monoclonal antibody of monocytes



NOT FOR HUMAN USE. FOR RESEARCH ONLY. NOT FOR DIAGNOSTIC OR THERAPEUTIC USE.



Cell Sciences®
65 Parker Street
Unit 11
Newburyport, MA 01950

Toll Free: 888-769-1246
Phone: 978-572-1070
Fax: 978-992-0298

E-mail: info@cellsciences.com
Website: www.cellsciences.com