

CR2

Mouse Anti-Human CD21/CR2 Clone B-E5 PE mAb

Catalog No.	CDM164	Quantity:	100 tests
Alternate Names:	C3DR, CD21, CR, CVID7, SLEB9		
Description:	Complement Component (3d/Epstein Barr Virus) Receptor 2 (CR2) is also known as CD21. CR2/CD21 is a membrane protein, which functions as a receptor for Epstein Barr Virus (EBV) binding on B- and T-lymphocytes. Genetic variations in the CR2 gene are associated with susceptibility to Systemic Lupus Erythematosus type 9 (SLEB9).		
Concentration:	100 tests / 1ml		
Gene ID:	1380		
Hybridoma:	Myeloma X63/AG.8653 x BALB/c spleen cells		
Specificity:	Recognizes the Epstein-Barr virus receptor (EBV R), CR2, C3d R, a 110 kDa protein.		
Host:	Mouse		
Immunogen:	Daudi cell line		
Isotype:	IgG2a		
Clone:	B-E5		
Conjugate:	PE		
Formulation:	Lyophilized from phosphate-buffered saline + 1% BSA + 0.1% sodium azide.		
Purification:	Ion exchange chromatography		
Reconstitution:	Reconstitute with 1 ml deionised water.		
Applications:	Flow cytometry Competes with EBV for CD21 binding. The optimal concentration should be determined by the user for each specific application.		
Application Notes:	Use 10 µl to label 10 ⁶ cells or 100 µl of whole blood		
Storage & Stability:	Stable at 2-8°C for six months after reconstitution. DO NOT FREEZE.		

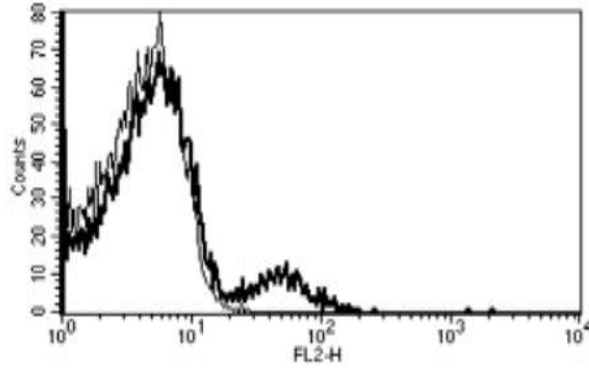
A typical staining pattern with the B-E5 monoclonal antibody of lymphocytes.



Cell Sciences®
65 Parker Street
Unit 11
Newburyport, MA 01950

Toll Free: 888-769-1246
Phone: 978-572-1070
Fax: 978-992-0298

E-mail: info@cellsciences.com
Website: www.cellsciences.com



NOT FOR HUMAN USE. FOR RESEARCH ONLY. NOT FOR DIAGNOSTIC OR THERAPEUTIC USE.



Cell Sciences®
65 Parker Street
Unit 11
Newburyport, MA 01950

Toll Free: 888-769-1246
Phone: 978-572-1070
Fax: 978-992-0298

E-mail: info@cellsciences.com
Website: www.cellsciences.com