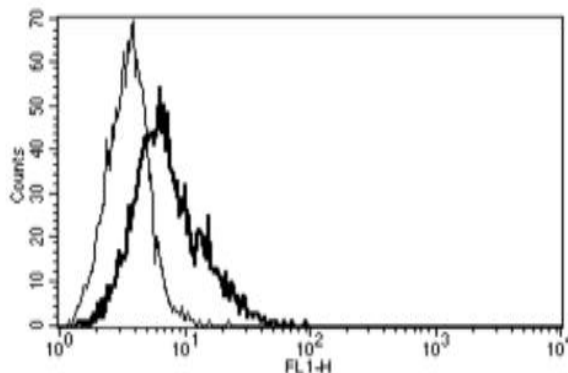


## CD40LG

### Mouse Anti-Human CD154/CD40L Clone B-B29 FITC mAb

<b>Catalog No.</b>	CDM184	<b>Quantity:</b>	100 tests
<b>Alternate Names:</b>	CD154, CD40L, HIGM1, IGM, IMD3, T-BAM, TNFSF5, TRAP, gp39, hCD40L		
<b>Description:</b>	Anti-human CD154/CD40L Clone B-B29 FITC conjugated mAb		
<b>Concentration:</b>	100 tests / 1ml		
<b>Gene ID:</b>	959		
<b>Specificity:</b>	Recognises the CD40L, TRAP, T-BAM antigen, a 28/30/33 kDa protein		
<b>Hybridoma:</b>	Myeloma X63/AG.8653 x BALB/c spleen cells		
<b>Immunogen:</b>	CD40L transfected 3T6 cells		
<b>Isotype:</b>	Mouse IgG2a		
<b>Clone:</b>	B-B29		
<b>Conjugate:</b>	FITC		
<b>Formulation:</b>	PBS + 1% BSA + 0.1% sodium azide		
<b>Purification:</b>	Ion exchange chromatography		
<b>Applications:</b>	Suitable for flow cytometry		
<b>Application Notes:</b>	Use 10 µl to label 10 <sup>6</sup> cells or 100 µl of whole blood.		
<b>Storage &amp; Stability:</b>	Stable at 2-8°C for 12 months. For longer storage, freeze aliquots <input type="checkbox"/> <b>Avoid repeated freeze-thaw cycles.</b>		

A typical staining pattern with the B-B29 monoclonal antibody of CD40L transfected 3T6 cell line.



NOT FOR HUMAN USE. FOR RESEARCH ONLY. NOT FOR DIAGNOSTIC OR THERAPEUTIC USE.



**Cell Sciences®**  
65 Parker Street  
Unit 11  
Newburyport, MA 01950

Toll Free: 888-769-1246  
Phone: 978-572-1070  
Fax: 978-992-0298

E-mail: [info@cellsciences.com](mailto:info@cellsciences.com)  
Website: [www.cellsciences.com](http://www.cellsciences.com)