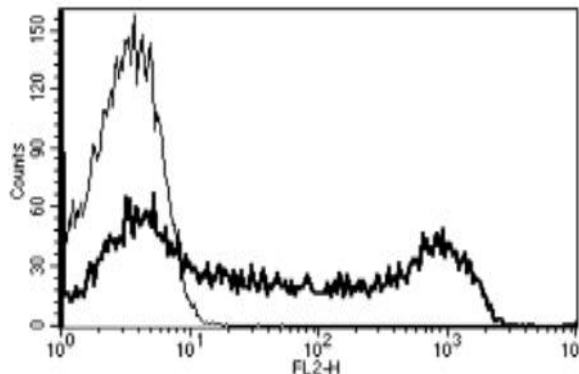


## Mouse Anti-Human CD45RA Clone B-C15 PE mAb

<b>Catalog No.</b>	CDM191	<b>Quantity:</b>	100 tests
<b>Description:</b>	Mouse Anti-human CD45RA clone B-C15 PE mAb		
<b>Concentration:</b>	100 tests / 1 ml		
<b>Immunization:</b>	Reh6 cell line		
<b>Hybridoma:</b>	Myeloma X63/AG.8653 x BALB/c spleen cells		
<b>Specificity:</b>	Recognizes the restricted Leucocyte Antigen (LCA) with different isoforms of 205-220 kDa		
<b>Host:</b>	Mouse		
<b>Isotype:</b>	IgG1		
<b>Clone:</b>	B-C15		
<b>Conjugate:</b>	PE		
<b>Formulation:</b>	Lyophilized from PBS + 1% BSA + 0.1% sodium azide. Precaution: Sodium azide is a poisonous and hazardous substance which should be handled by trained staff only.		
<b>Purification:</b>	Ion exchange chromatography		
<b>Reconstitution:</b>	<b>Centrifuge vial prior to opening.</b> Reconstitute with 1 ml deionized water.		
<b>Applications:</b>	Flow Cytometry		
<b>Application Notes:</b>	Use 10 µl to label 10 <sup>6</sup> cells or 100 µl of whole blood.		
<b>Storage &amp; Stability:</b>	Store lyophilized product at 2-8°C. Stable at +2-4°C for six months after reconstitution. <b>DO NOT FREEZE.</b>		

A typical staining pattern with the B-C15 monoclonal antibody of lymphocytes.



NOT FOR HUMAN USE. FOR RESEARCH ONLY. NOT FOR DIAGNOSTIC OR THERAPEUTIC USE.



**Cell Sciences®**  
65 Parker Street  
Unit 11  
Newburyport, MA 01950

Toll Free: 888-769-1246  
Phone: 978-572-1070  
Fax: 978-992-0298

E-mail: [info@cellsciences.com](mailto:info@cellsciences.com)  
Website: [www.cellsciences.com](http://www.cellsciences.com)