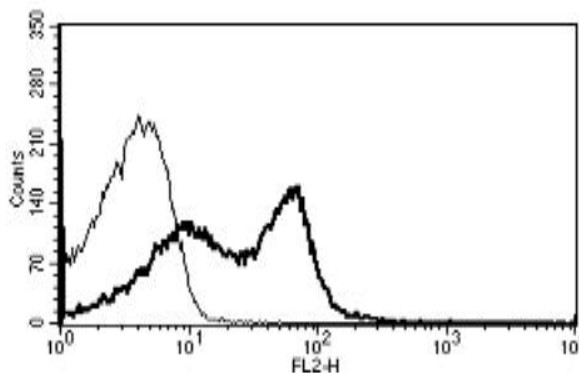


## CD58

### Mouse Anti-Human CD58/LFA-3 (Clone B-L28) PE mAb

|                                 |  |                  |           |
|---------------------------------|--|------------------|-----------|
| <b>Catalog No.</b>              | CDM226   | <b>Quantity:</b> | 100 tests |
| <b>Alternate Names:</b>         | ag3; LFA3; LFA-3   |                  |           |
| <b>Description:</b>             | The monoclonal antibody recognizes human CD58/LFA-3. CD58/LFA-3 is a ligand of the T lymphocyte CD2 protein, and functions in adhesion and activation of T lymphocytes. The cell surface protein is widely expressed on hematopoietic and non-hematopoietic tissues including leukocytes, erythrocytes, endothelial cells, epithelial cells and fibroblasts. |                  |           |
| <b>Gene ID:</b>                 | 965  |                  |           |
| <b>Conjugate:</b>               | PE   |                  |           |
| <b>Specificity:</b>             | Recognizes the Lymphocyte Function-associated Antigen-3 (CD58/LFA-3), a 40-70 kDa protein.   |                  |           |
| <b>Host:</b>                    | Mouse  |                  |           |
| <b>Isotype:</b>                 | IgG1   |                  |           |
| <b>Immunogen:</b>               | CD58-transfected CHO cell line   |                  |           |
| <b>Clone:</b>                   | B-L28  |                  |           |
| <b>Formulation:</b>             | Phosphate-buffered saline with 1% BSA and 0.1% sodium azide.   |                  |           |
| <b>Purification:</b>            | Ion exchange chromatography  |                  |           |
| <b>Reconstitution:</b>          | Reconstitute with 1 ml deionized water.  |                  |           |
| <b>Applications:</b>            | Flow cytometry   |                  |           |
| <b>Application Notes:</b>       | Use 10 µl to label 10 <sup>6</sup> cells or 100 µl of whole blood.   |                  |           |
| <b>Storage &amp; Stability:</b> | Stable at +2-8°C for six months after reconstitution. <b>DO NOT FREEZE.</b>  |                  |           |

A typical staining pattern with the B-L28 monoclonal antibody of lymphocytes



# cellsciences.com

NOT FOR HUMAN USE. FOR RESEARCH ONLY. NOT FOR DIAGNOSTIC OR THERAPEUTIC USE.



**Cell Sciences®**  
65 Parker Street  
Unit 11  
Newburyport, MA 01950

Toll Free: 888-769-1246  
Phone: 978-572-1070  
Fax: 978-992-0298

E-mail: [info@cellsciences.com](mailto:info@cellsciences.com)  
Website: [www.cellsciences.com](http://www.cellsciences.com)