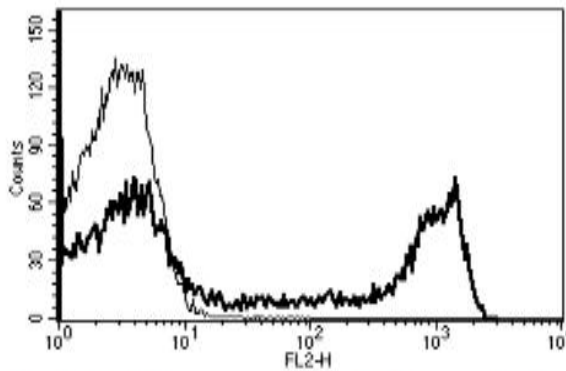


CD8A

Mouse Anti-Human CD8 (Clone B-Z31) PE mAb

Catalog No.	CDM252	Quantity:	100 tests
Alternate Names:	CD8a; Leu2; MAL		
Description:	The monoclonal antibody recognizes CD8, a 32-34 kDa protein. The CD8 antigen is a cell surface glycoprotein found on most cytotoxic T lymphocytes, and acts as a coreceptor with the T-cell receptor to recognize antigens displayed by an antigen presenting cell in the context of class I MHC molecules. The coreceptor functions as either a homodimer composed of two alpha chains or as a heterodimer composed of one alpha and one beta chain.		
Gene ID:	925		
Conjugate:	PE		
Specificity:	Recognizes the human T-cell coreceptor, CD8, a 32-34 kDa protein.		
Host:	Mouse		
Isotype:	IgG2a		
Immunogen:	Crude thymus membrane fraction		
Clone:	B-Z31		
Formulation:	Lyophilized in phosphate-buffered saline with 5% BSA and 0.1% sodium azide.		
Purification:	Protein A affinity chromatography		
Reconstitution:	Reconstitute with 1 ml deionized water.		
Applications:	Flow cytometry		
Application Notes:	Use 10 µl to label 10 ⁶ cells or 100 µl of whole blood. The optimal concentration should be determined by the user for each specific application.		
Storage & Stability:	Stable at +2-8°C for six months after reconstitution. DO NOT FREEZE.		

A typical staining pattern with the B-Z31 monoclonal antibody of lymphocytes



NOT FOR HUMAN USE. FOR RESEARCH ONLY. NOT FOR DIAGNOSTIC OR THERAPEUTIC USE.



Cell Sciences®
65 Parker Street
Unit 11
Newburyport, MA 01950

Toll Free: 888-769-1246
Phone: 978-572-1070
Fax: 978-992-0298

E-mail: info@cellsciences.com
Website: www.cellsciences.com