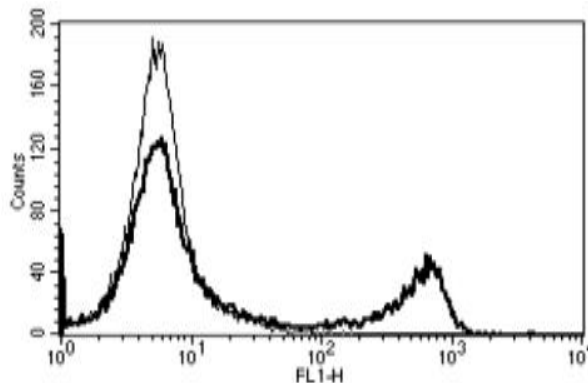


## CD8A

### Mouse Anti-Human CD8 (Clone B-Z31) mAb

<b>Catalog No.</b>	CDM253	<b>Quantity:</b>	200 tests
<b>Alternate Names:</b>	CD8a; Leu2; MAL		
<b>Description:</b>	The monoclonal antibody recognizes CD8, a 32-34 kDa protein. The CD8 antigen is a cell surface glycoprotein found on most cytotoxic T lymphocytes, and acts as a coreceptor with the T-cell receptor to recognize antigens displayed by an antigen presenting cell in the context of class I MHC molecules. The coreceptor functions as either a homodimer composed of two alpha chains or as a heterodimer composed of one alpha and one beta chain.		
<b>Concentration:</b>	200 tests/ 2 ml		
<b>Gene ID:</b>	925		
<b>Conjugate:</b>	Unconjugated		
<b>Specificity:</b>	Recognizes the human T-cell coreceptor, CD8, a 32-34 kDa protein.		
<b>Host:</b>	Mouse		
<b>Isotype:</b>	IgG2a		
<b>Immunogen:</b>	Crude thymus membrane fraction		
<b>Clone:</b>	B-Z31		
<b>Formulation:</b>	Phosphate-buffered saline with 1 % BSA and 0.09 % sodium azide.		
<b>Purification:</b>	Protein A affinity chromatography		
<b>Applications:</b>	Flow cytometry, Immunohistochemistry		
<b>Application Notes:</b>	Flow cytometry: Use 10 µl to label 10 <sup>6</sup> cells or 100 µl of whole blood. Immunohistochemistry: Recommended dilution 1:50. The optimal concentration should be determined by the user for each specific application.		
<b>Storage &amp; Stability:</b>	Stable at 2-8°C for 1 year. For longer storage, freeze in aliquots at -20°C to -80°C. <b>Avoid repeated freeze-thaw cycles.</b>		

A typical staining pattern with the B-Z31 monoclonal antibody of lymphocytes



NOT FOR HUMAN USE. FOR RESEARCH ONLY. NOT FOR DIAGNOSTIC OR THERAPEUTIC USE.



**Cell Sciences®**  
65 Parker Street  
Unit 11  
Newburyport, MA 01950

Toll Free: 888-769-1246  
Phone: 978-572-1070  
Fax: 978-992-0298

E-mail: [info@cellsciences.com](mailto:info@cellsciences.com)  
Website: [www.cellsciences.com](http://www.cellsciences.com)

# cellsciences.com



**Cell Sciences®**  
65 Parker Street  
Unit 11  
Newburyport, MA 01950

Toll Free: 888-769-1246  
Phone: 978-572-1070  
Fax: 978-992-0298

E-mail: [info@cellsciences.com](mailto:info@cellsciences.com)  
Website: [www.cellsciences.com](http://www.cellsciences.com)