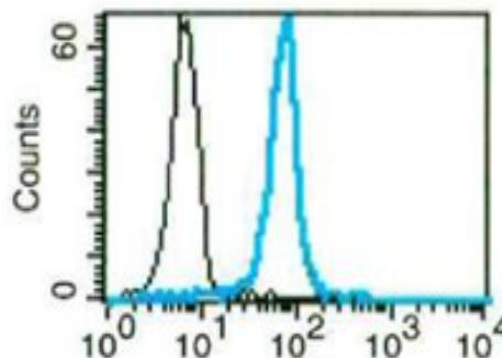


## CEACAM1

### Mouse Anti-Human CEACAM1 (Clone B-D60) FITC mAb

<b>Catalog No.</b>	CDM294	<b>Quantity:</b>	100 tests
<b>Alternate Names:</b>	CD66a, carcinoembryonic antigen-related cell adhesion molecule 1, BGP, BGP1, BGPI		
<b>Description:</b>	The monoclonal antibody recognizes human CEACAM1, a member of the carcinoembryonic antigen (CEA) gene family, which belongs to the immunoglobulin superfamily. CEACAM1 was originally described in bile ducts of liver as biliary glycoprotein, and was later found to be a cell-cell adhesion molecule detected on leukocytes, epithelia, and endothelia.		
<b>Concentration:</b>	100 tests / 1 ml		
<b>Gene ID:</b>	634		
<b>Conjugate:</b>	FITC		
<b>Specificity:</b>	Recognizes CEACAM1/CD66a, 160 kDa protein.		
<b>Host:</b>	Mouse		
<b>Isotype:</b>	IgG1		
<b>Immunogen:</b>	Skin derived T cell clone		
<b>Clone:</b>	B-D60		
<b>Formulation:</b>	Liquid in PBS with 5 % BSA and 0.1 % sodium azide. Precaution: Sodium azide is a poisonous and hazardous substance which should be handled by trained staff only.		
<b>Purification:</b>	Ion exchange chromatography		
<b>Applications:</b>	Flow cytometry		
<b>Application Notes:</b>	Use 10 µl to label 10 <sup>6</sup> cells or 100 µl of whole blood. The optimal concentration should be determined by the user for each specific application.		
<b>Storage &amp; Stability:</b>	Stable at 2-8°C for 1 year. For longer storage, freeze in aliquots at -20°C to -80°C. <b>Avoid repeated freeze-thaw cycles.</b>		

A typical pattern of staining granulocytes with the B-D60 FITC monoclonal antibody.



NOT FOR HUMAN USE. FOR RESEARCH ONLY. NOT FOR DIAGNOSTIC OR THERAPEUTIC USE.



**Cell Sciences®**  
65 Parker Street  
Unit 11  
Newburyport, MA 01950

Toll Free: 888-769-1246  
Phone: 978-572-1070  
Fax: 978-992-0298

E-mail: [info@cellsciences.com](mailto:info@cellsciences.com)  
Website: [www.cellsciences.com](http://www.cellsciences.com)