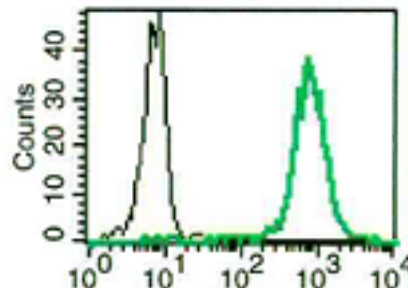


CEACAM1

Mouse Anti-Human CEACAM1 (Clone B-D60) PE mAb

Catalog No.	CDM295	Quantity:	100 tests
Alternate Names:	CD66a, carcinoembryonic antigen-related cell adhesion molecule 1, BGP, BGP1, BGPI		
Description:	The monoclonal antibody recognizes human CEACAM1, a member of the carcinoembryonic antigen (CEA) gene family, which belongs to the immunoglobulin superfamily. CEACAM1 was originally described in bile ducts of liver as biliary glycoprotein, and was later found to be a cell-cell adhesion molecule detected on leukocytes, epithelia, and endothelia.		
Gene ID:	634		
Conjugate:	PE		
Specificity:	Recognizes CEACAM1/CD66a, 160 kDa protein.		
Host:	Mouse		
Isotype:	IgG1k		
Immunogen:	Skin derived T cell clone		
Clone:	B-D60		
Formulation:	Lyophilized from PBS with 5% BSA and 0.1% sodium azide. Precaution: Sodium azide is a poisonous and hazardous substance which should be handled by trained staff only.		
Purification:	Ion exchange chromatography		
Reconstitution:	Reconstitute with 1 ml deionized water.		
Applications:	Flow cytometry		
Application Notes:	Use 10 µl to label 10 ⁶ cells or 100 µl of whole blood. The optimal concentration should be determined by the user for each specific application.		
Storage & Stability:	Stable at 2-8°C for six months after reconstitution. DO NOT FREEZE.		

A typical staining pattern with the B-D60 PE monoclonal antibody of granulocytes



NOT FOR HUMAN USE. FOR RESEARCH ONLY. NOT FOR DIAGNOSTIC OR THERAPEUTIC USE.

