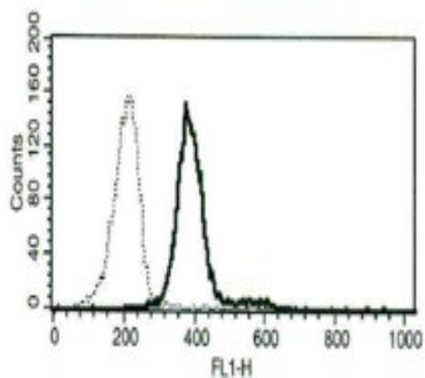


## CEACAM1

### Mouse Anti-Human CEACAM1 (Clone B-D60) mAb

<b>Catalog No.</b>	CDM296	<b>Quantity:</b>	200 tests
<b>Alternate Names:</b>	CD66a, carcinoembryonic antigen-related cell adhesion molecule 1, BGP, BGP1, BGPI		
<b>Description:</b>	The monoclonal antibody recognizes human CEACAM1, a member of the carcinoembryonic antigen (CEA) gene family, which belongs to the immunoglobulin superfamily. CEACAM1 was originally described in bile ducts of liver as biliary glycoprotein, and was later found to be a cell-cell adhesion molecule detected on leukocytes, epithelia, and endothelia.		
<b>Concentration:</b>	200 tests / 2 ml		
<b>Gene ID:</b>	634		
<b>Conjugate:</b>	Unconjugated		
<b>Specificity:</b>	Recognizes CEACAM1/CD66a, 160 kDa protein.		
<b>Host:</b>	Mouse		
<b>Isotype:</b>	IgG1k		
<b>Immunogen:</b>	Skin derived T cell clone		
<b>Clone:</b>	B-D60		
<b>Formulation:</b>	Liquid in PBS with 1% BSA and 0.1 % sodium azide. Precaution: Sodium azide is a poisonous and hazardous substance which should be handled by trained staff.		
<b>Purification:</b>	Ion exchange chromatography		
<b>Applications:</b>	Flow cytometry		
<b>Application Notes:</b>	Use 10 µl to label 10 <sup>6</sup> cells or 100 µl of whole blood. The optimal concentration should be determined by the user for each specific application.		
<b>Storage &amp; Stability:</b>	Stable at 2-8°C for 1 year. For longer storage, freeze in aliquots at -20°C to -80°C. <b>Avoid repeated freeze-thaw cycles.</b>		

Flow cytometric analysis with the B-D60 monoclonal antibody on granulocytes



NOT FOR HUMAN USE. FOR RESEARCH ONLY. NOT FOR DIAGNOSTIC OR THERAPEUTIC USE.