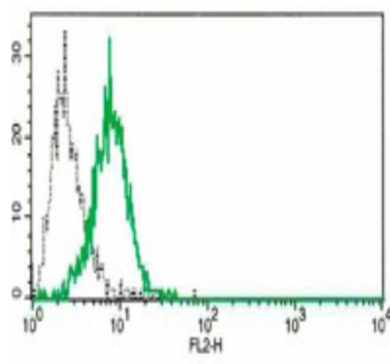


NCR1

Mouse Anti-Human NKp46 (Clone B-N40) mAb

Catalog No.	CDM299	Quantity:	200 tests
Alternate Names:	Natural cytotoxicity triggering receptor 1, NCR1, NK cell-activating receptor, CD335, LY94, NK-p46, NKP46		
Description:	The monoclonal antibody recognizes human NK-p46/ NCR1.		
Concentration:	100 tests/ ml		
Gene ID:	9437		
Conjugate:	Unconjugated		
Specificity:	Recognizes human NKp46, a 26.6 kDa protein		
Host:	Mouse		
Isotype:	IgG1k		
Immunogen:	Recombinant human NKp46/ NCR1		
Clone:	B-N40		
Formulation:	Liquid in PBS with 1 % BSA and 0.09 % sodium azide. Precaution: Sodium azide is a poisonous and hazardous substance which should be handled by trained staff only.		
Purification:	Ion exchange chromatography		
Applications:	Flow Cytometry		
Application Notes:	Use 10 µl to label 10 ⁶ cells or 100 µl of whole blood. The optimal concentration should be determined by the user for each specific application.		
Storage & Stability:	Stable at 2-8°C for 12 months. For longer storage, freeze aliquots at -20 to -80°C. Avoid repeated freeze-thaw cycles.		

Flow cytometric analysis with the B-N40 monoclonal antibody on YT cell line



NOT FOR HUMAN USE. FOR RESEARCH ONLY. NOT FOR DIAGNOSTIC OR THERAPEUTIC USE.



Cell Sciences®
65 Parker Street
Unit 11
Newburyport, MA 01950

Toll Free: 888-769-1246
Phone: 978-572-1070
Fax: 978-992-0298

E-mail: info@cellsciences.com
Website: www.cellsciences.com