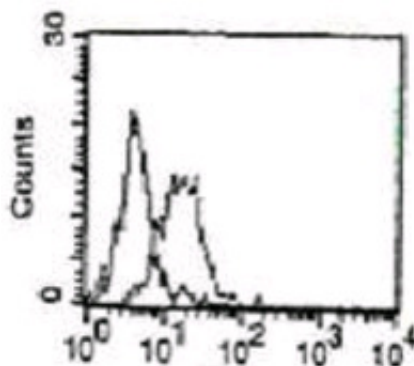


## MICB

### Mouse Anti-Human MICB (Clone B-D54) Azide Free mAb

<b>Catalog No.</b>	CDM309	<b>Quantity:</b>	200 µg
<b>Alternate Names:</b>	MHC class I polypeptide-related sequence B, PERB11.2		
<b>Description:</b>	The mouse monoclonal antibody recognizes human MICB, a heavily glycosylated protein that is a ligand for the NKG2D type II receptor. Binding of the ligand activates the cytolytic response of natural killer (NK) cells, CD8 alphabeta T cells, and gammadelta T cells that express the receptor. This protein is stress-induced and is similar to MHC class I molecules. However, it does not associate with beta-2-microglobulin or bind peptides.		
<b>Gene ID:</b>	4277		
<b>Concentration:</b>	1 mg/ml		
<b>Conjugate:</b>	Unconjugated		
<b>Specificity:</b>	Recognizes both natural and recombinant MICB. Recognizes soluble and membrane-bound antigen.		
<b>Host:</b>	Mouse		
<b>Immunogen:</b>	IgG1k		
<b>Isotype:</b>	Recombinant human MICB		
<b>Clone:</b>	B-D54		
<b>Formulation:</b>	Liquid in PBS. Sterile-filtered. Carrier and preservative free.		
<b>Storage &amp; Stability:</b>	Stable at 2-8°C for 1 year. For longer storage, freeze aliquots at -20 to -80°C. <b>Avoid repeated freeze-thaw cycles.</b>		

A typical staining pattern with the B-D54 monoclonal antibody on Molt4 cell line (human acute lymphoblastic leukemia cell line).



NOT FOR HUMAN USE. FOR RESEARCH ONLY. NOT FOR DIAGNOSTIC OR THERAPEUTIC USE.

