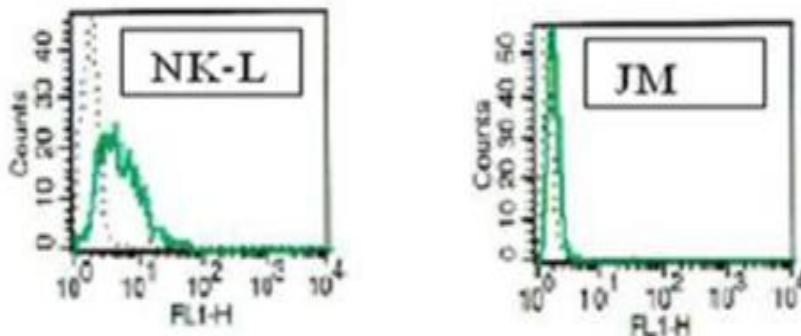


GNLY

Mouse Anti-Human Granulysin Clone B-L38 Purified mAb

Catalog No.	CDM315	Quantity:	200 tests
Alternate Names:	T-cell activation protein 519, 519, D2S69E, LAG-2, LAG2, NKG5, TLA519		
Description:	Mouse Monoclonal Antibody against Human Granulysin Clone B-L38. Granulysin is a member of the saposin-like protein (SAPLIP) family and is located in the cytotoxic granules of T cells, which are released upon antigen stimulation. It is present in cytotoxic granules of cytotoxic T lymphocytes and natural killer cells and has antimicrobial activity against <i>M. tuberculosis</i> and other organisms.		
Concentration:	200 tests / 2 ml Purified		
Gene ID:	10578		
Specificity:	Recognizes human Granulysin		
Host:	Mouse		
Immunogen:	Recombinant human Granulysin (NKG5 and LAG-2)		
Isotype:	IgG1k		
Clone:	B-L38		
Hybridoma:	Myeloma X63/AG.8653 x BALB/c lymph node cells		
Formulation:	Phosphate-buffered saline with 1 % BSA and 0.1 % sodium azide. Precaution: Sodium azide is a poisonous and hazardous substance which should be handled by trained staff only.		
Purification:	Ion exchange chromatography		
Reconstitution:	Use 10 µl to label 10 ⁶ cells or 100 µl of whole blood		
Applications:	Suitable for flow cytometry		
Storage & Stability:	Stable at 2-4°C for 12 months. DO NOT FREEZE		

Intracytoplasmic staining of Granulysin with B-L38 (green) vs isotypic control (grey) on NK-L cell line. The JM cell line is used as a negative cell line control.



NOT FOR HUMAN USE. FOR RESEARCH ONLY. NOT FOR DIAGNOSTIC OR THERAPEUTIC USE.

