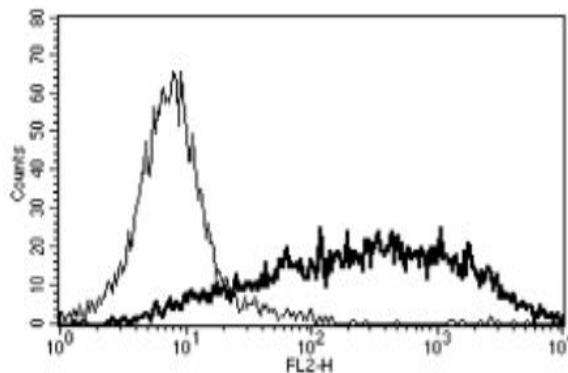


## CD25

### Mouse Anti-Human IL-2R $\alpha$ /CD25 (Clone B-B10) PE mAb

<b>Catalog No.</b>	CDM350	<b>Quantity:</b>	100 tests
<b>Alternate Names:</b>	CD25, IDDM10, IL2R, TCGFR		
<b>Description:</b>	The monoclonal antibody recognizes human CD25, the IL-2 receptor alpha chain. The IL-2 receptor alpha (IL2RA) and beta (IL2RB) chains, together with the common gamma chain (IL2RG), constitute the high-affinity IL-2 receptor. Homodimeric alpha chains (IL2RA) result in low-affinity receptor, while homodimeric beta (IL2RB) chains produce a medium-affinity receptor.		
<b>Gene ID:</b>	3559		
<b>Conjugate:</b>	PE		
<b>Specificity:</b>	Recognizes the human IL-2 Receptor $\alpha$ chain (IL-2 Ra), a 55 kDa protein. Recognizes only membrane bound IL-2 Ra		
<b>Host:</b>	Mouse		
<b>Isotype:</b>	IgG1		
<b>Immunogen:</b>	PHA activated T cells		
<b>Clone:</b>	B-B10		
<b>Formulation:</b>	Lyophilized from PBS with 1% BSA and 0.1% sodium azide. Precaution: Sodium azide is a poisonous and hazardous substance which should be handled by trained staff only.		
<b>Purification:</b>	Ion exchange chromatography		
<b>Reconstitution:</b>	<b>Centrifuge vial prior to opening.</b> Reconstitute with 1 ml sterile, distilled water.		
<b>Applications:</b>	Flow Cytometry		
<b>Application Notes:</b>	Use 10 $\mu$ l to label 10 <sup>6</sup> cells or 100 $\mu$ l of whole blood. The optimal concentration should be determined by the user for each specific application.		
<b>Storage &amp; Stability:</b>	Store at 2-8°C for up to six months after reconstitution. <b>DO NOT FREEZE.</b>		

A typical staining pattern with the B-B10 monoclonal antibody of PHA activated lymphocytes.



NOT FOR HUMAN USE. FOR RESEARCH ONLY. NOT FOR DIAGNOSTIC OR THERAPEUTIC USE.