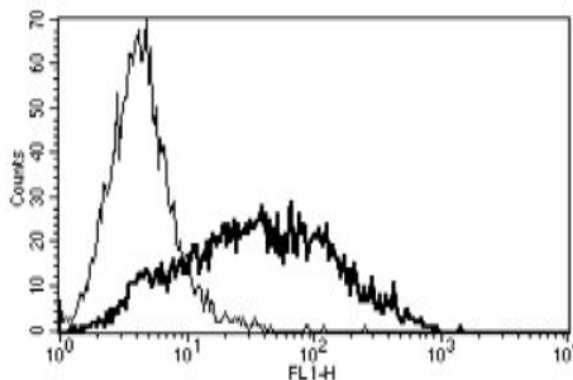


IL2RA

Mouse Anti-Human IL-2R α /CD25 (Clone B-F2) FITC mAb

Catalog No.	CDM351	Quantity:	100 tests
Alternate Names:	CD25, IDDM10, IL2R, TCGFR		
Description:	The monoclonal antibody recognizes human CD25, the IL-2 receptor alpha chain. The IL-2 receptor alpha (IL2RA) and beta (IL2RB) chains, together with the common gamma chain (IL2RG), constitute the high-affinity IL-2 receptor. Homodimeric alpha chains (IL2RA) result in low-affinity receptor.		
Concentration:	100 tests/ml		
Gene ID:	3559		
Conjugate:	FITC		
Specificity:	Recognizes the human IL-2 Receptor α chain (IL-2 Ra), a 55 kDa protein. Recognizes soluble and membrane bound IL-2 Ra.		
Host:	Mouse		
Isotype:	IgG1		
Immunogen:	PHA activated T cells		
Clone:	B-F2		
Formulation:	Liquid in PBS with 1% BSA and 0.1% sodium azide. Precaution: Sodium azide is a poisonous and hazardous substance which should be handled by trained staff only.		
Purification:	Ion exchange chromatography		
Applications:	Flow Cytometry		
Application Notes:	Use 10 μ l to label 10 ⁶ cells or 100 μ l of whole blood. The optimal concentration should be determined by the user.		
Storage & Stability:	Stable at 2-8°C for 12 months. For longer storage, freeze aliquots at -20 to -80°C. Avoid repeated freeze-thaw cycles.		

A typical staining pattern with the anti-human IL-2 R alpha clone B-F2 monoclonal antibody of PHA activated lymphocytes



NOT FOR HUMAN USE. FOR RESEARCH ONLY. NOT FOR DIAGNOSTIC OR THERAPEUTIC USE.



Cell Sciences[®]
65 Parker Street
Unit 11
Newburyport, MA 01950

Toll Free: 888-769-1246
Phone: 978-572-1070
Fax: 978-992-0298

E-mail: info@cellsciences.com
Website: www.cellsciences.com