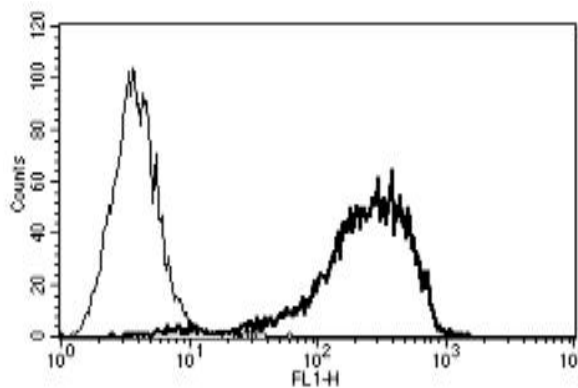


SDC1

Mouse Anti-Human Syndecan 1/CD138 Clone B-A38 PE mAb

Catalog No.	CDM367	Quantity:	100 tests
Alternate Names:	Syndecan-1		
Description:	Mouse Anti-human CD138 Clone B-A38 PE monoclonal antibody		
Hybridoma:	Myeloma X63/AG.8653 x BALB/c spleen cells		
Specificity:	Recognizes syndecan-1, a heparin sulfate proteoglycan with a MW of 65-70 kDa.		
Host:	Mouse		
Immunogen:	U266 cell line		
Isotype:	IgG1		
Clone:	B-A38		
Conjugate:	PE		
Formulation:	Lyophilized from a sterile filtered solution containing PBS + 5% BSA + 0.1% sodium azide. Precaution: Sodium azide is a poisonous and hazardous substance which should be handled by trained staff only.		
Purification:	Ion exchange chromatography		
Reconstitution:	Centrifuge vial prior to opening. Reconstitute in 1 ml deionized water.		
Applications:	Flow Cytometry: After reconstitution in 1 ml deionized water, use 10 µl to label 10 ⁶ cells or 100 µl of whole blood. The optimal concentration should be determined by the user for each specific application.		
Storage & Stability:	Stable at 2-4°C for six months after reconstitution. Do not freeze.		

A typical staining pattern with the B-A38 monoclonal antibody of U266 cell line



NOT FOR HUMAN USE. FOR RESEARCH ONLY. NOT FOR DIAGNOSTIC OR THERAPEUTIC USE.



Cell Sciences®
65 Parker Street
Unit 11
Newburyport, MA 01950

Toll Free: 888-769-1246
Phone: 978-572-1070
Fax: 978-992-0298

E-mail: info@cellsciences.com
Website: www.cellsciences.com