

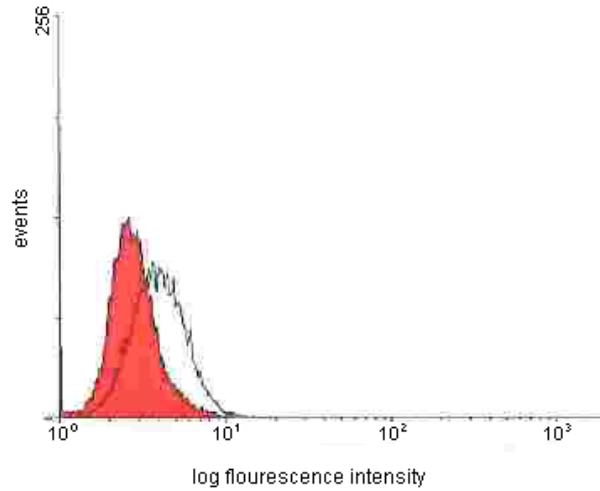
## IFN alpha

### Mouse Anti-Human Interferon Alpha, Clone MMHA-1, FITC mAb

<b>Catalog No.</b>	CM2047
<b>Lot No:</b>	1118301
<b>Quantity:</b>	25 µg
<b>Description:</b>	Mouse Anti-Human Interferon Alpha, Clone MMHA-1, FITC mAb
<b>Concentration:</b>	0.05 mg/ml
<b>Volume:</b>	0.5 ml
<b>F/P Ratio:</b>	5.7
<b>Host:</b>	Mouse
<b>Immunogen:</b>	Human Leukocyte Interferon
<b>Isotype:</b>	Mouse IgG <sub>1</sub>
<b>Clone:</b>	MMHA-11
<b>Conjugate:</b>	FITC
<b>Formulation:</b>	Liquid in PBS containing 1% BSA and 0.05% Kathon as a preservative, pH 7.2
<b>Applications:</b>	Flow Cytometry
<b>Application Notes:</b>	0.125 µg/ml of antibody is sufficient for labeling of 1x10 <sup>6</sup> cells in 100 µl total volume of A549 human lung epithelial cell line. The optimal concentration should be determined by the user for each specific application.
<b>Storage &amp; Stability:</b>	Protect from prolonged exposure to light. Store at 2-4°C. <b>DO NOT FREEZE.</b>



analysis on non-included cells (closed histogram) and included cells (open histogram).



**NOT FOR HUMAN USE. FOR RESEARCH ONLY. NOT FOR DIAGNOSTIC OR THERAPEUTIC USE.**



**Cell Sciences®**  
65 Parker St.  
Unit 11  
Newburyport, MA 01950

Toll Free: 888-769-1246  
Phone: 978-572-1070  
Fax: 978-992-0298

E-mail: [info@cellsciences.com](mailto:info@cellsciences.com)  
Website: [www.cellsciences.com](http://www.cellsciences.com)