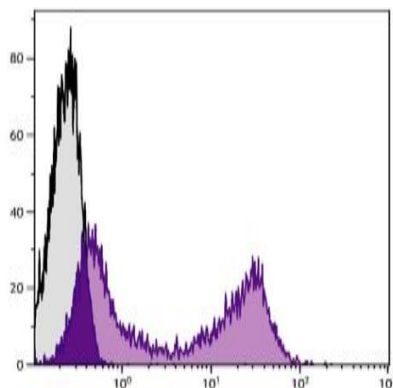


Rat Anti-Rabbit Ig Clone SB87a Biotin mAb

Catalog No.	CMB005	Quantity:	500 µg
Description:	Rat Anti-Rabbit Ig Clone SB87a Biotin mAb		
Concentration:	500 µg/mL		
Specificity:	Rabbit IgG, IgM, and IgA		
Immunogen:	Rabbit IgG and IgM		
Isotype:	Rat (Sprague Dawley) IgG2aκ		
Clone:	SB87a		
Conjugate:	Biotin		
Formulation:	Liquid volume of 1.0 mL in a buffer of PBS/NaN ₃		
Isotype Control	Rat IgG _{2a} -BIOT		
Cross-Reactivity:	Minimal reactivity to human, mouse, rat, hamster, goat, sheep, porcine, canine, and rhesus immunoglobulins and guinea pig serum		
Applications:	Applications for relevant formats of this clone include ELISA, FLISA and Flow Cytometry.		
Application Notes:	Working dilutions; ELISA 1:5,000 - 1:20,000, Flow Cytometry ≤1 µg/10 ⁶ cells. Since applications vary, you should determine the optimum working dilution for the product that is appropriate for your specific need.		
Storage & Stability:	Store at 2-8°C. For long term storage at -20°C, aliquot into smaller volumes to avoid multiple freeze/thaw cycles.		

Rabbit blood peripheral lymphocytes were stained with Rat Anti-Rabbit Ig-BIOT followed by Streptavidin-FITC (Cat. No. CPO014).



NOT FOR HUMAN USE. FOR RESEARCH ONLY. NOT FOR DIAGNOSTIC OR THERAPEUTIC USE.