

CASP3

Mouse Anti-Human Caspase 3 Apoptosis-Related Cysteine Peptidase Clone C33 mAb

Catalog No. CMC431 **Quantity:** 100 µg

Alternate Names: Caspase 3, CPP32, CPP32B, SCA-1

Gene ID: 836

Description: Mouse Anti-Human Caspase 3 Clone C33 monoclonal antibody. The caspase family of cysteine proteases play a key role in apoptosis. Caspase 3 is the most extensively studied apoptotic protein among caspase family members. Caspase 3 is synthesized as inactive pro-enzyme that is processed in cells undergoing apoptosis by self-proteolysis and/or cleavage by another upstream protease. The processed form of caspase 3 consists of large (17 kD) and small (12 kD) subunits which associate to form an active enzyme. The active caspase 3 proteolytically cleaves and activates other caspases, as well as relevant targets in the cells (e.g., PARP and DFF).

Concentration: 0.2 mg/ml

Specificity: Recognizes both proform and the cleaved fragments of caspase 3.

Host: Mouse

Immunogen: Recombinant human caspase 3

Isotype: IgG1

Clone: C33

Formulation: Liquid in PBS + 50% glycerol + 0.5 mg/ml BSA + 0.01% thimerosal. Precaution: Thimerosal is a poisonous and hazardous substance which should be handled by trained staff only.

Cross-Reactivity: Reacts with both human and mouse caspase 3.

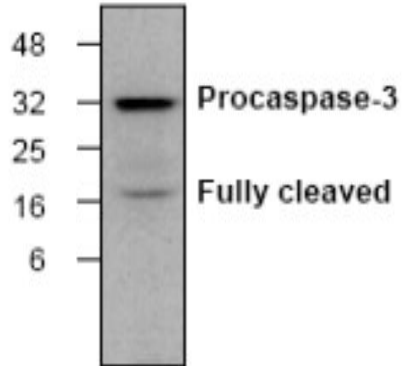
Applications: Western Blot

Application Notes: For Western Blot, use a working dilution of 0.5-4 µg/ml. The optimal concentration should be determined by the user for each specific application.

Storage & Stability: Store at -20°C or in working aliquots at -80°C for long term storage. **Avoid repeated freeze-thaw cycles.**



Western blot analysis of caspase 3 expression in HeLa cells treated with camptothecin (2 μ M).



NOT FOR HUMAN USE. FOR RESEARCH ONLY. NOT FOR DIAGNOSTIC OR THERAPEUTIC USE.



Cell Sciences[®]
480 Neponset Street
Bldg 12A
Canton, MA 02021

Toll Free: 888-769-1246
Phone: 781-828-0610
Fax: 781-828-0542

E-mail: info@cellsciences.com
Website: www.cellsciences.com