

## CASP1

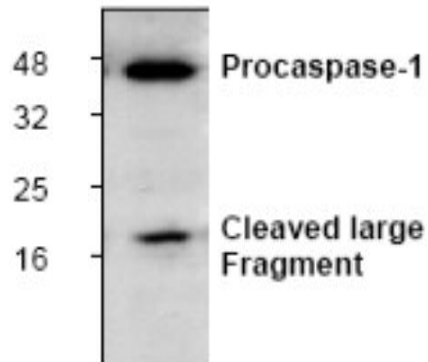
### Rabbit Anti-Human Caspase 1 Apoptosis-Related Cysteine Peptidase Affinity Purified pAb

|                           |  |                  |        |
|---------------------------|--|------------------|--------|
| <b>Catalog No.</b>        | CMC433   | <b>Quantity:</b> | 100 µg |
| <b>Alternate Names:</b>   | Caspase 1, IL1B-convertase, ICE, IL1BC, P45  |                  |        |
| <b>Gene ID:</b>           | 834  |                  |        |
| <b>Description:</b>       | Rabbit Anti-Human Caspase 1 Affinity Purified polyclonal antibody. Caspase family of cysteine proteases has been shown to play a key role in apoptosis. Caspase 1 is the mammalian caspase responsible for the proteolytic conversion of the proforms of interleukin-1 $\beta$ and IL18 into active cytokines. Like other caspases, Caspase 1 itself is synthesized as a pro-enzyme that is cleaved during activation into large (20 kDa) and small (10 kDa) subunits. The cellular role of caspase 1 appears limited to cytokine activation as they do not have obvious roles in apoptosis. |                  |        |
| <b>Concentration:</b>     | 0.2 mg/ml  |                  |        |
| <b>Specificity:</b>       | Recognizes 45 kDa pro-caspase 1 and the 20 kDa cleaved product.  |                  |        |
| <b>Host:</b>              | Rabbit   |                  |        |
| <b>Immunogen:</b>         | Synthetic peptide surrounding amino acid 132 of human caspase 1  |                  |        |
| <b>Formulation:</b>       | Liquid in PBS, pH 7.2 + 30% glycerol + 0.5% BSA + 0.01% thimerosal. Precaution: Thimerosal is a poisonous and hazardous substance which should be handled by trained staff only.   |                  |        |
| <b>Purification:</b>      | Biospecific affinity chromatography  |                  |        |
| <b>Cross-Reactivity:</b>  | Reacts with human, mouse, and rat.   |                  |        |
| <b>Applications:</b>      | Western Blot<br>Immunoprecipitation<br>Immunofluorescence  |                  |        |
| <b>Application Notes:</b> | For Western Blot use a working dilution of 0.5-4 µg/ml.<br>For Immunoprecipitation use a working dilution of 4-8 µg/ml.<br>For Immunofluorescence use a working dilution of 10-20 µg/ml.<br>Blocking Peptide (Cat. No. CMC433BP) is available separately.<br>The optimal concentration should be determined by the user for each specific application.   |                  |        |



**Storage & Stability:** Store at -20°C or in working aliquots at -80°C for long term storage. **Avoid repeated freeze-thaw cycles.**

Western blot analysis of Caspase 1 expression in Rat liver tissue lysate.



**NOT FOR HUMAN USE. FOR RESEARCH ONLY. NOT FOR DIAGNOSTIC OR THERAPEUTIC USE.**