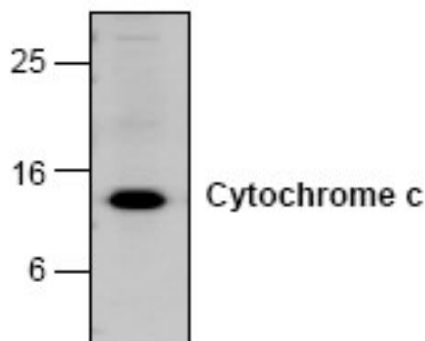


CYCS

Mouse Anti-Multispecies Cytochrome C Somatic Clone 7H8.2C12 mAb

Catalog No.	CMC439	Quantity:	100 µg
Alternate Names:	Cytochrome c, CYC, CYCSA		
Description:	Mouse Anti-Multispecies Cytochrome c Clone 7H8.2C12 monoclonal antibody		
Concentration:	0.2 mg/ml		
Specificity:	Detects a 12.0 kDa protein corresponding to the apparent molecular weight of cytochrome c. Reacts with denatured cytochrome c. Does not bind native cytochrome c.		
Host:	Mouse		
Immunogen:	Pigeon cytochrome c		
Isotype:	IgG2b		
Clone:	7H8.2C12		
Formulation:	Liquid in PBS + 50% glycerol + 1% BSA + 0.02% sodium azide. Precaution: Sodium azide is a poisonous and hazardous substance which should be handled by trained staff only.		
Cross-Reactivity:	Reacts with human, mouse, and rat.		
Applications:	Western Blot		
Application Notes:	For Western Blot, use a working dilution of 0.5-4 µg/ml. The optimal concentration should be determined by the user for each specific application.		
Storage & Stability:	Store at -20°C or in working aliquots at -80°C for long term storage. Avoid repeated freeze-thaw cycles.		

Western Blot analysis of cytochrome c with Jurkat cell lysate



NOT FOR HUMAN USE. FOR RESEARCH ONLY. NOT FOR DIAGNOSTIC OR THERAPEUTIC USE.

