

Epha2

Rat Anti-Mouse Eph Receptor A2 Clone 8F21 mAb

Catalog No.	CME115	Quantity:	100 µg
Alternate Names:	Ephrin Receptor EphA2, Eck, Myk2, Sek2		
Gene ID:	13836		
Description:	This antibody was produced from a hybridoma (mouse myeloma fused with spleen cells from a rat) immunized with recombinant mouse EphA2 extracellular domain. IgG1 fraction of the culture supernatant was purified by Protein A/G affinity chromatography.		
Specificity:	This antibody was selected for its ability to detect mouse EphA2 in western blots. In this format, this antibody does not cross-react with recombinant mouse EphA3, 4, 6, 7, 8, and EphB1, 2, 3, 4, or 6.		
Host:	Rat		
Immunogen:	Mouse EphA2 extracellular domain		
Isotype:	IgG1		
Clone:	8F21		
Formulation:	Lyophilized from a 0.2 µm filtered solution in phosphate-buffered saline (PBS).		
Purification:	Protein A/G affinity chromatography		
Reconstitution:	Centrifuge vial prior to opening. Reconstitute the antibody with 500 µl sterile PBS (final concentration 200µg/ml). Reconstituted antibody can be aliquoted and stored frozen at < -20 for at least for six months without detectable loss of activity. Avoid repeated freeze-thaw cycles.		
Cross-Reactivity:	Does not cross react with recombinant mouse EPHA3, 4, 6, 7, 8, or EPHB1, 2, 3, 4, or 6.		

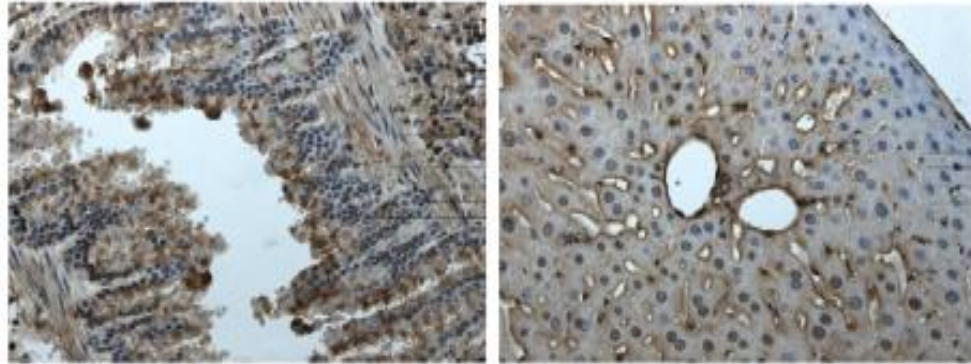
Application Notes:



1. Western Blot (non-reducing): Yes (1:100-1000)
2. Immunohistochemistry (Paraffin): Yes (1:100-200)

Storage & Stability: Lyophilized samples are stable for 2 years from date of receipt when stored at -80°C.
Avoid repeated freeze-thaw cycles.

EphA2 immunohistochemistry staining of paraffin sections of mouse kidney and liver tissues from LPS exposed animals.



NOT FOR HUMAN USE. FOR RESEARCH ONLY. NOT FOR DIAGNOSTIC OR THERAPEUTIC USE.

