

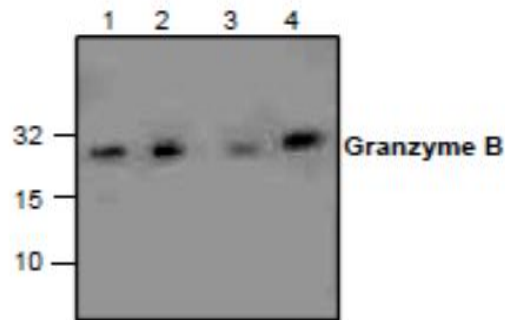
GZMB

Mouse Anti-Human GZMB Clone B18.1 mAb

Catalog No.	CMG108	Quantity:	100 µg
Alternate Names:	Granzyme B, CCPI, CGL1, CSPB, CTLA1, CTSG1, HLP		
Description:	Granzyme B is a 27 kDa serine protease stored in granules of activated cytotoxic T cells and NK cells. Upon target cell contact, granzyme B is directionally exocytosed and assisted by perforin, enters the target cell. With its unique substrate specificity (granzyme B cleaves after Asp), granzyme B processes and activates various pro-caspases thereby inducing apoptosis in the target cell.		
Concentration:	0.5 mg/ml		
Gene ID:	3002		
Specificity:	Human Granzyme B		
Host:	Mouse		
Immunogen:	Human recombinant granzyme B (aa 7-227)		
Isotype:	IgG1		
Clone:	B18.1		
Formulation:	100 µg (0.5 mg/ml) in PBS containing 1 mg/ml BSA + 1.5 mM sodium azide and 50% glycerol. Precaution: Sodium azide is a poisonous and hazardous substance which should be handled by trained staff only.		
Purification:	Affinity purified		
Reconstitution:	The antibody solution should be gently mixed before use.		
Applications:	Western Blot Immunoprecipitation Flow Cytometry Immunohistochemistry The optimal concentration should be determined by the user for each specific application.		
Storage & Stability:	Store at -20°C or in working aliquots at -80°C for long term storage. Avoid repeated freeze-thaw cycles.		



Western blot analysis of Granzyme B in lysate from Jurkat cells (lane 1 & 2), 3T3 cells (lane 3) and rat kidney (lane 4).



NOT FOR HUMAN USE. FOR RESEARCH ONLY. NOT FOR DIAGNOSTIC OR THERAPEUTIC USE.

