

Mouse Anti-Human IgD Clone IADB6 Biotin mAb

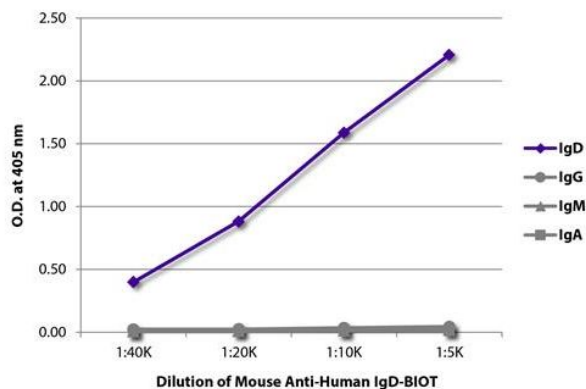
Catalog No.	CMH014	Quantity:	500 µg
Description:	Mouse Anti-Human IgD Clone IADB6 Biotin mAb		
Concentration:	500 µg/mL		
Specificity:	Human IgD		
Immunogen:	Human IgD myeloma protein		
Isotype:	Mouse IgG _{2a} K		
Clone:	IADB6		
Conjugate:	Biotin		
Formulation:	Liquid volume of 1.0 mL in a buffer of PBS/NaN ₃ .		
Isotype Control	Mouse IgG _{2a} -Biotin.		

Applications: Applications for relevant formats of this clone include ELISA, FLISA, Flow Cytometry, Immunohistochemistry, and Immunoprecipitation.

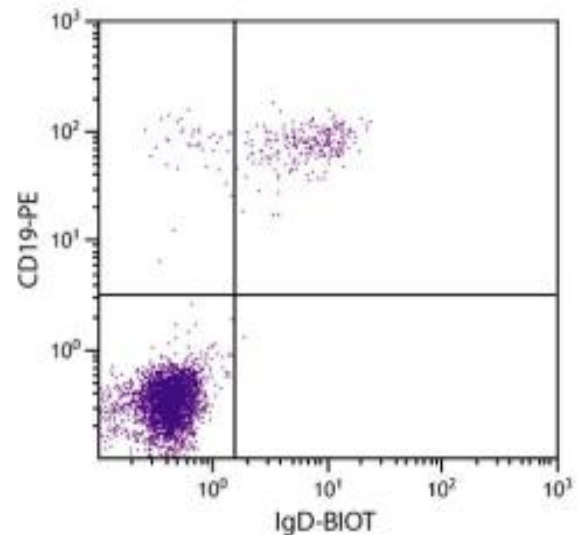
Application Notes: Working dilutions for ELISA of 1:5,000 – 20,000., FLISA with FITC and AF488 conjugates 1:200 - 1:400. Flow Cytometry ≤ 1 µg/10⁶ cells in suggested final volume of 100 µL. Since applications vary, you should determine the optimum working dilution for the product that is appropriate for your specific need.

Storage & Stability: Store at 2-8°C. For long term storage at -20°C, aliquot into smaller volumes to avoid multiple freeze/thaw cycles.

ELISA plate was coated with purified human IgD, IgG, IgM, and IgA. Immunoglobulins were detected with serially diluted Mouse Anti-Human IgD-Biotin followed by Streptavidin-HRP (Cat. No. CPO016).



Human blood peripheral lymphocytes were stained with Mouse Anti-Human IgD-BIOT and Mouse Anti-Human CD19-PE followed by Streptavidin-FITC (Cat. No. CPO014) .



NOT FOR HUMAN USE. FOR RESEARCH ONLY. NOT FOR DIAGNOSTIC OR THERAPEUTIC USE.