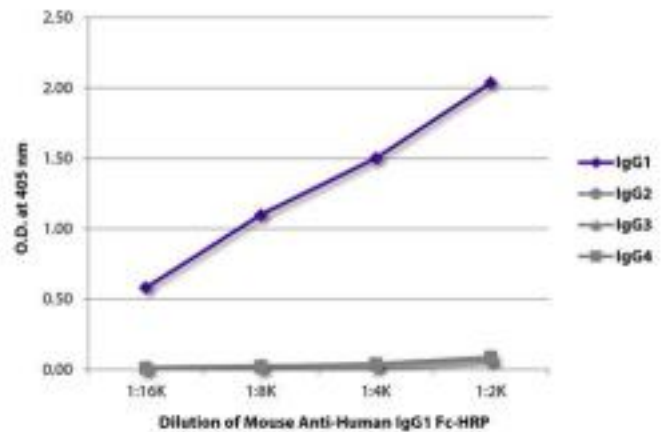
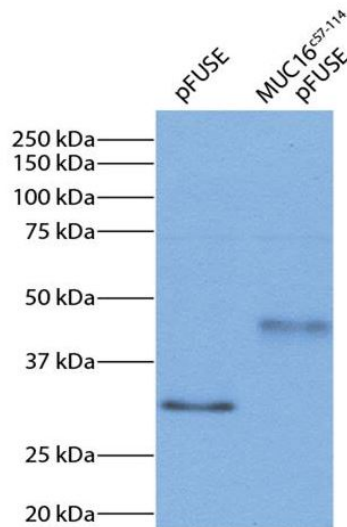


Mouse Anti-Human IgG₁ Fc Clone HP6001 HRP mAb

Catalog No.	CMH019	Quantity:	1.0 mL
Description:	Mouse Anti-Human IgG ₁ Fc Clone HP6001 HRP mAb		
Specificity:	Human IgG ₁ Fc,		
Immunogen:	Human IgG ₁ myeloma protein.		
Isotype:	Mouse (BALB/c) IgG _{2b} K		
Clone:	HP6001		
Conjugate:	HRP (Horseradish Peroxidase).		
Formulation:	Liquid volume of 1.0 mL in a stock solution in 50% glycerol/50% PBS, pH 7.4. No preservative added.		
Isotype Control	Mouse IgG _{2b} -HRP		
Applications:	Applications for relevant formats of this clone include ELISA and Western Blot.		
Application Notes:	Working dilutions for ELISA of 1:4,000 – 1:8,000. Since applications vary, you should determine the optimum working dilution for the product that is appropriate for your specific need.		
Storage & Stability:	Store at 2-8°C or long-term at -20°C.		

293 cell expression of MUC16c57-114-pFUSE-hIgG1-Fc2 fusion protein was resolved by electrophoresis, transferred to PVDF membrane, and probed with Mouse Anti-Human IgG1 Fc-HRP and chemiluminescent detection.

ELISA plate was coated with purified human IgG1, IgG2, IgG3, and IgG4. Immunoglobulins were detected with serially diluted Mouse Anti-Human IgG1 Fc-HRP.



NOT FOR HUMAN USE. FOR RESEARCH ONLY. NOT FOR DIAGNOSTIC OR THERAPEUTIC USE.

