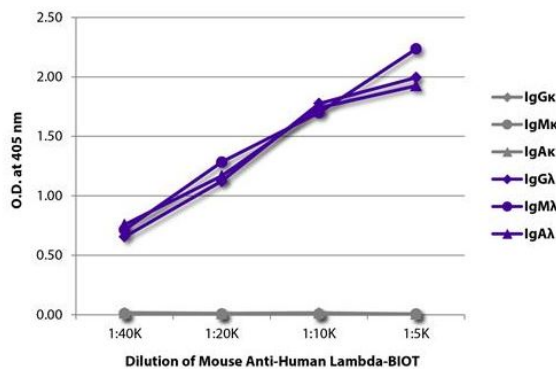


## Mouse Anti-Human Lambda Clone JDC-12 Biotin mAb

<b>Catalog No.</b>	CMH030	<b>Quantity:</b>	500 µg
<b>Description:</b>	Mouse Anti-Human Lambda Clone JDC-12 Biotin mAb		
<b>Concentration:</b>	500 µg/mL		
<b>Specificity:</b>	Human/Rhesus Lambda		
<b>Isotype:</b>	Mouse IgG <sub>1</sub> κ		
<b>Clone:</b>	JDC-12		
<b>Conjugate:</b>	Biotin		
<b>Formulation:</b>	Liquid volume of 1.0 mL in a buffer of PBS/NaN <sub>3</sub> .		
<b>Isotype Control</b>	Mouse IgG <sub>1</sub> -Biotin		
<b>Applications:</b>	Applications for relevant formats of this clone include ELISA, FLISA, Flow Cytometry, Western Blot and Immunoprecipitation.		
<b>Application Notes:</b>	Working dilutions for ELISA 1:5,000 – 1:20,000, FLISA with FITC or AF488 conjugates ≤ 1 µg/10 <sup>6</sup> cells, Flow Cytometry with FITC or AF488 conjugates ≤ 1 µg/10 <sup>6</sup> cells. Since applications vary, you should determine the optimum working dilution for the product that is appropriate for your specific need.		
<b>Storage &amp; Stability:</b>	Store at 2-8°C. For long term storage at -20°C, aliquot into smaller volumes to avoid multiple freeze/thaw cycles.		

ELISA plate was coated with purified human IgGκ, IgMκ, IgAκ, IgGλ, IgMλ, and IgAλ. Immunoglobulins were detected with serially diluted Mouse Anti-Human Lambda-BIOT followed by Streptavidin-HRP (Cat. No. CPO016)



**NOT FOR HUMAN USE. FOR RESEARCH ONLY. NOT FOR DIAGNOSTIC OR THERAPEUTIC USE.**

