

HSP90AA1

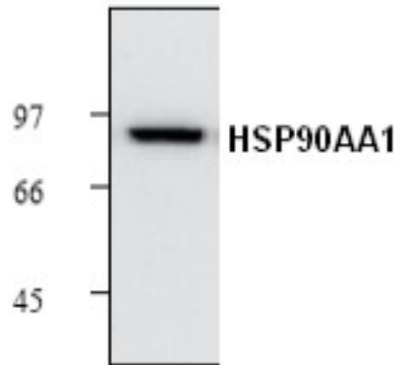
Mouse Anti-Multispecies Heat Shock Protein 90kDa alpha Class A Member 1 Clone S88 mAb

Catalog No.	CMH116	Quantity:	100 µg
Alternate Names:	Hsp90, Hsp89, HSPC1, HSPCA, HSPCAL1, HSPCAL4, HSPN, LAP2		
Description:	<p>Hsp90 (also known as Hsp82, Hsp83, or Hsp89), a 90 kDa protein, is the most abundant protein in the cytosolic fraction in many cell types. The high level of Hsp90 in many cell types suggests that Hsp90 may play a general role in the cell, but little is known about its general function. Hsp90 has no known enzymatic activity, and thus it has been presumed that Hsp90 may function through protein-protein interactions. Hsp90 exists in a dimeric form and has been observed to bind to several cellular proteins such as retro-virus kinases (PP60v-src), steroid receptors, heme-regulated protein kinase, actin and tubulin. In this regard, Hsp90, like Hsp70, may function as a "molecular chaperone". Hsp90 exists as two isoforms referred to as Hsp86 and HSP84 in mouse cells or Hsp90α and Hsp90β in human cells.</p>		
Concentration:	0.2 mg/ml		
Gene ID:	3320		
Specificity:	Recognizes a 90 kDa protein corresponding to the apparent molecular weight of Hsp90 on SDS-PAGE immunoblots. Detects both Hsp90 alpha and beta.		
Host:	Mouse		
Immunogen:	Achlya ambisexualis Hsp90		
Isotype:	IgG1		
Clone:	S88		
Formulation:	Liquid in PBS + 1 mg/ml BSA + 50% glycerol + 0.2% thimerosal. Precaution: Thimerosal is a poisonous and hazardous substance which should be handled by trained staff only.		
Purification:	Affinity purified.		
Cross-Reactivity:	Reacts with human, mouse, rat, monkey, bovine, rabbit, guinea pig, dog, sheep, chicken, and pig.		
Applications:	Western Blot Immunoprecipitation Immunohistochemistry		
Application Notes:	Western blot analysis (1-2 µg/ml), immunoprecipitation (4-8 µg/ml) and Immunohistochemistry (10-20 µg/ml). However, the optimal conditions should be determined individually. The antibody recognizes a 90 kDa protein, corresponding to the apparent molecular weight of Hsp90 on SDS-PAGE immunoblots. This antibody detects both Hsp90 alpha and beta.		



Storage & Stability: Store at -20°C or in working aliquots at -80°C for long term storage. **Avoid repeated freeze-thaw cycles.**

Western Blot analysis of HSP90AA1 with heat shocked human HeLa cell lysate



NOT FOR HUMAN USE. FOR RESEARCH ONLY. NOT FOR DIAGNOSTIC OR THERAPEUTIC USE.



Cell Sciences[®]
480 Neponset Street
Bldg 12A
Canton, MA 02021

Toll Free: 888-769-1246
Phone: 781-828-0610
Fax: 781-828-0542

E-mail: info@cellsciences.com
Website: www.cellsciences.com