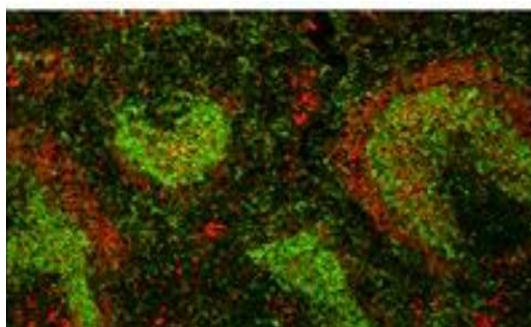


Rat Anti-Mouse IgD Clone 11-26 Biotin mAb

Catalog No.	CMM014	Quantity:	500 µg
Description:	Rat Anti-Mouse IgD Clone 11-26 Biotin mAb		
Concentration:	500 µg/mL		
Specificity:	Mouse IgD		
Isotype:	Rat IgG _{2a} K		
Clone:	11-26		
Conjugate:	Biotin		
Formulation:	Liquid volume of 1.0mL in a buffer of PBS/NaN ₃		
Isotype Control	Rat IgG _{2a} -BIOT		
Applications:	Applications for relevant formats of this clone include Flow Cytometry, IHC, IP, separation, costimulation, proximity ligation assay.		
Application Notes:	Working dilutions; Flow Cytometry $\leq 1 \mu\text{g}/10^6$ cells. Since applications vary, you should determine the optimum working dilution for the product that is appropriate for your specific need.		
Storage & Stability:	Store at 2-8°C. For long term storage at -20°C, aliquot into smaller volumes to avoid multiple freeze/thaw cycles.		

Frozen mouse spleen tissue was stained with Goat Anti-Mouse IgM, Human ads-TXRD and Rat Anti-Mouse IgD-BIOT followed by Streptavidin-AF488.



NOT FOR HUMAN USE. FOR RESEARCH ONLY. NOT FOR DIAGNOSTIC OR THERAPEUTIC USE.