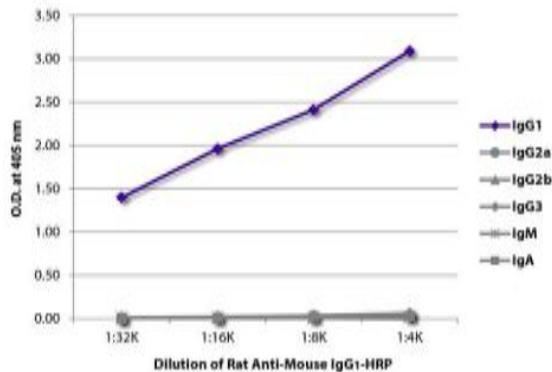


Rat Anti-Mouse IgG1 Clone SB77e HRP mAb

Catalog No.	CMM021	Quantity:	1.0 mL
Description:	Rat Anti-Mouse IgG1 Clone SB77e HRP mAb		
Specificity:	Mouse IgG ₁		
Isotype:	Rat (Sprague Dawley) IgG _{2b} K		
Clone:	SB77e		
Conjugate:	HRP (Horseradish Peroxidase)		
Formulation:	Liquid volume of 1.0 mL supplied in PBS/NaN ₃		
Isotype Control	Rat IgG _{2b} -HRP		
Applications:	Applications for relevant formats of this clone include ELISA, Immunohistochemistry, and Western Blotting.		
Application Notes:	Recommended working dilution for ELISA 1:4,000-1:8,000. Since applications vary, you should determine the optimum working dilution for the product that is appropriate for your specific need.		
Storage & Stability:	Store at 2-8°C or long-term at -20°C.		

ELISA plate was coated with purified mouse IgG1, IgG2a, IgG2b, IgG3, IgM, and IgA. Immunoglobulins were detected with serially diluted Rat Anti-Mouse IgG1-HRP.



NOT FOR HUMAN USE. FOR RESEARCH ONLY. NOT FOR DIAGNOSTIC OR THERAPEUTIC USE.

