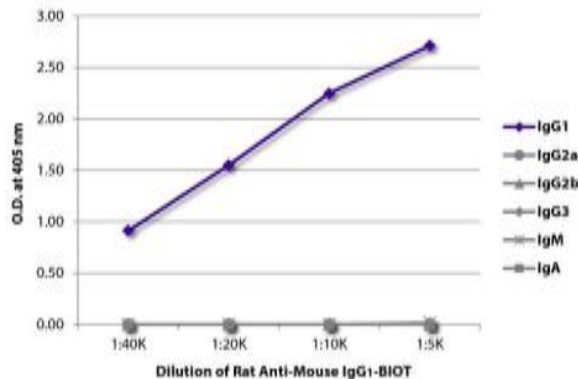


## Rat Anti-Mouse IgG<sub>1</sub> Clone SB77e Biotin mAb

<b>Catalog No.</b>	CMM022	<b>Quantity:</b>	500 µg
<b>Description:</b>	Rat Anti-Mouse IgG <sub>1</sub> -BIOT		
<b>Concentration:</b>	500 µg/mL		
<b>Specificity:</b>	Mouse IgG <sub>1</sub>		
<b>Isotype:</b>	Rat (Sprague Dawley) IgG <sub>2b</sub> K		
<b>Clone:</b>	SB77e		
<b>Conjugate:</b>	Biotin		
<b>Formulation:</b>	Liquid volume of 1.0 mL in a buffer of PBS/NaN <sub>3</sub>		
<b>Isotype Control</b>	Rat IgG <sub>2b</sub> -Biotin		
<b>Applications:</b>	Applications for relevant formats of this clone include ELISA, Flow Cytometry, IHC, Western Blot.		
<b>Application Notes:</b>	Working dilutions; ELISA 1:5,000 - 1:10,000. Since applications vary, you should determine the optimum working dilution for the product that is appropriate for your specific need.		
<b>Storage &amp; Stability:</b>	Store at 2-8°C. For long term storage at -20°C, aliquot into smaller volumes to avoid multiple freeze/thaw cycles.		

ELISA plate was coated with purified mouse IgG1, IgG2a, IgG2b, IgG3, IgM, and IgA. Immunoglobulins were detected with serially diluted Rat Anti-Mouse IgG1-BIOT.



**NOT FOR HUMAN USE. FOR RESEARCH ONLY. NOT FOR DIAGNOSTIC OR THERAPEUTIC USE.**

