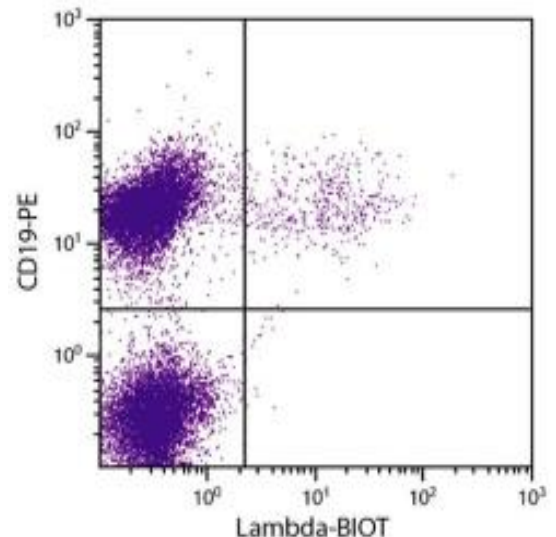
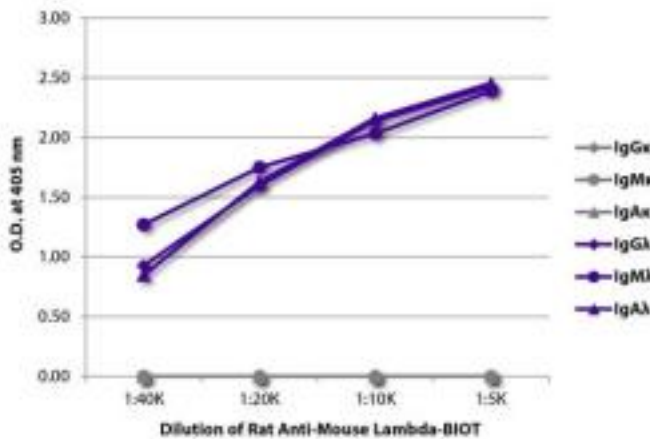


## Rat Anti-Mouse Lambda Clone JC5-1 Biotin mAb

<b>Catalog No.</b>	CMM033	<b>Quantity:</b>	500 µg
<b>Description:</b>	Rat Anti-Mouse Lambda Clone JC5-1 Biotin mAb		
<b>Concentration:</b>	500 µg/mL		
<b>Specificity:</b>	Mouse lambda		
<b>Isotype:</b>	Rat IgG <sub>2b</sub> K		
<b>Clone:</b>	JC5-1		
<b>Conjugate:</b>	Biotin		
<b>Formulation:</b>	Liquid volume of 1.0 mL in a buffer of PBS/NaN <sub>3</sub>		
<b>Isotype Control</b>	Rat IgG <sub>2b</sub> -HRP		
<b>Applications:</b>	Applications for relevant formats of this clone include ELISA, FLISA, Flow Cytometry, Immunohistochemistry and Western Blot.		
<b>Application Notes:</b>	Working dilutions; ELISA 1:5,000 - 1:10,000, Flow Cytometry ≤1 µg/10 <sup>6</sup> cells. Since applications vary, you should determine the optimum working dilution for the product that is appropriate for your specific need.		
<b>Storage &amp; Stability:</b>	Store at 2-8°C. For long term storage at -20°C, aliquot into smaller volumes to avoid multiple freeze/thaw cycles.		

ELISA plate was coated with purified mouse IgGκ, IgMκ, IgAκ, IgGλ, IgMλ, and IgAλ. Immunoglobulins were detected with serially diluted Rat Anti-Mouse Lambda-BIOT followed by Streptavidin-HRP (Cat. No. CPO016).

BALB/c mouse splenocytes were stained with Rat Anti-Mouse Lambda-BIOT and Rat Anti-Mouse CD19-PE followed by Streptavidin-FITC (Cat. No. CPO014).



NOT FOR HUMAN USE. FOR RESEARCH ONLY. NOT FOR DIAGNOSTIC OR THERAPEUTIC USE.

