

Rat Anti-Mouse IgG_{2b} Clone SB74g FITC mAb

Catalog No. CMM034 **Quantity:** 500 µg

Description: Rat Anti-Mouse IgG_{2b} Clone SB74g FITC mAb

Concentration: 500 µg/mL

Specificity: Mouse IgG_{2b}

Immunogen: Mouse IgG_{2b} hybridoma

Isotype: Rat (Sprague Dawley) IgG_{2a}λ

Clone: SB74g

Conjugate: FITC (Fluorescein)

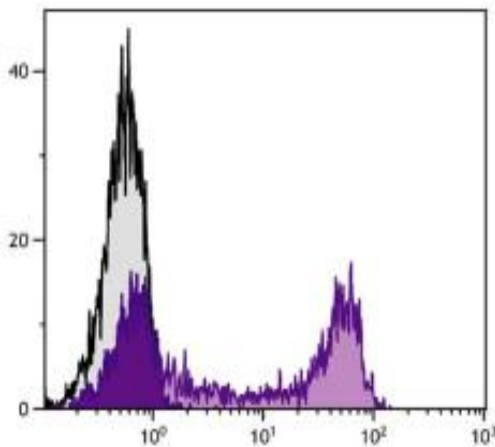
Formulation: Liquid volume of 1.0 mL in a buffer of PBS/NaN₃

Isotype Control Rat IgG_{2b}-FITC

Applications: Applications for relevant formats of this clone include ELISA, FLISA, and Flow Cytometry.

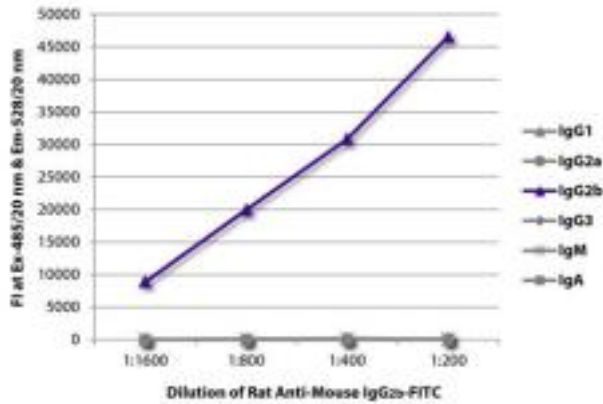
Application Notes: Working dilutions; FLISA 1:200 -1:400, Flow Cytometry ≤1 µg/10⁶ cells. Since applications vary, you should determine the optimum working dilution for the product that is appropriate for your specific need.

Storage & Stability: Store at 2-8°C. DO NOT FREEZE

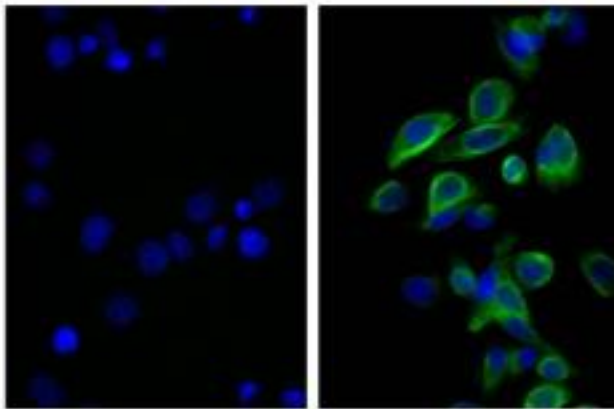


Human peripheral blood lymphocytes were stained with Mouse Anti-Human CD45RA primary (Isotype - Mouse IgG_{2b}) followed by Rat Anti-Mouse IgG_{2b}-FITC.





FLISA plate was coated with purified mouse IgG1, IgG2a, IgG2b, IgG3, IgM, and IgA. Immunoglobulins were detected with serially diluted Rat Anti-Mouse IgG2b-FITC.



Human pancreatic carcinoma cell line MIA PaCa-2 was stained with Mouse Anti-Cytokeratin 18 followed by Rat Anti-Mouse IgG2b-FITC and DAPI.

NOT FOR HUMAN USE. FOR RESEARCH ONLY. NOT FOR DIAGNOSTIC OR THERAPEUTIC USE.

