

## Rat Anti-Mouse IgG<sub>2b</sub> Clone SB74g Biotin mAb

<b>Catalog No.</b>	CMM036	<b>Quantity:</b>	500 µg
<b>Description:</b>	Rat Anti-Mouse IgG <sub>2b</sub> Clone SB74g Biotin mAb		
<b>Concentration:</b>	500 µg/mL		
<b>Specificity:</b>	Mouse IgG <sub>2b</sub>		
<b>Immunogen:</b>	Mouse IgG <sub>2b</sub> hybridoma		
<b>Isotype:</b>	Rat (Sprague Dawley) IgG <sub>2b</sub> λ		
<b>Clone:</b>	SB74g		
<b>Conjugate:</b>	Biotin		
<b>Formulation:</b>	Liquid volume of 1.0 mL in a buffer of PBS/NaN <sub>3</sub>		
<b>Isotype Control</b>	Rat IgG <sub>2b</sub> -BIOT		

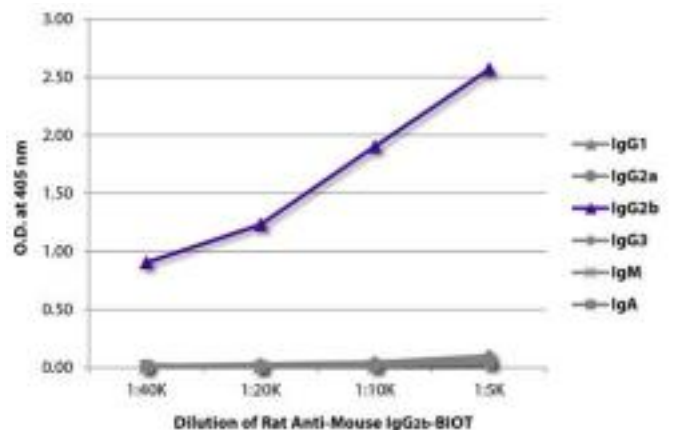
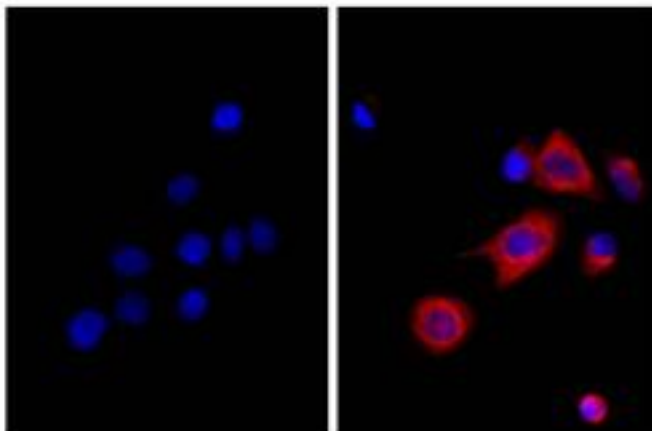
**Applications:** Applications for relevant formats of this clone include ELISA, FLISA, Flow Cytometry and Western Blot.

**Application Notes:** Working dilutions; ELISA 1:5,000 - 1:20,000, Flow Cytometry ≤1 µg/10<sup>6</sup> cells. Since applications vary, you should determine the optimum working dilution for the product that is appropriate for your specific need.

**Storage & Stability:** Store at 2-8°C. For long term storage at -20°C, aliquot into smaller volumes to avoid multiple freeze/thaw cycles.

Human pancreatic carcinoma cell line MIA PaCa-2 was stained with Mouse Anti-Cytokeratin 18 followed by Rat Anti-Mouse IgG2b-BIOT and then Streptavidin-CY3 and DAPI.

ELISA plate was coated with purified mouse IgG1, IgG2a, IgG2b, IgG3, IgM, and IgA. Immunoglobulins were detected with serially diluted Rat Anti-Mouse IgG2b-BIOT followed by Streptavidin-HRP (Cat. No. CPO016).



NOT FOR HUMAN USE. FOR RESEARCH ONLY. NOT FOR DIAGNOSTIC OR THERAPEUTIC USE.