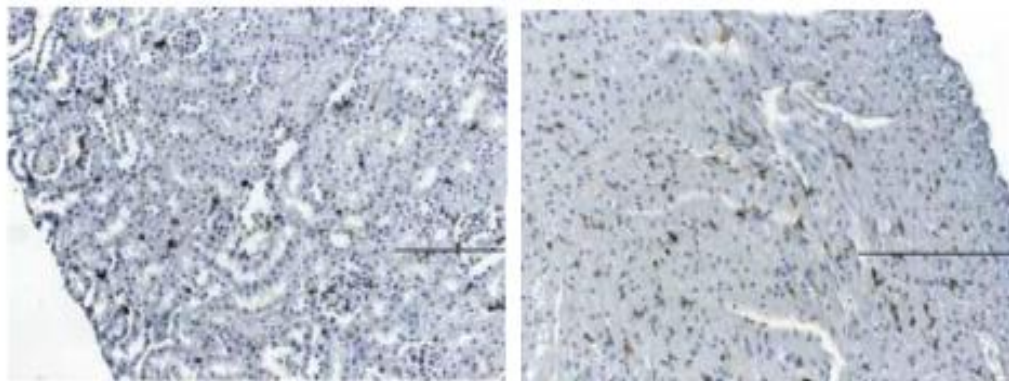


PTPRC

Rat Anti-Mouse Protein Tyrosine Phosphatase Receptor Type C Clone 5C16 mAb

Catalog No.	CMP140	Quantity:	200 µg
Alternate Names:	Lymphocyte Common Antigen, CD45, CD45R, B220, LY5, LCA, T200		
Gene ID:	19264		
Description:	Rat Anti-Mouse PTPRC Clone 5C16 monoclonal antibody		
Specificity:	Mouse PTPRC positive leukocytes		
Host:	Rat		
Immunogen:	Cell lysates of mouse leukocytes		
Isotype:	IgG2		
Clone:	5C16		
Formulation:	Lyophilized from a 0.2 µm sterile filtered solution in PBS		
Purification:	Protein A/G affinity chromatography		
Reconstitution:	Centrifuge vial prior to opening. Add 500 µl sterile distilled water to the vial to fully solubilize the antibody to a concentration of 200 µg/ml.		
Applications:	Immunohistochemistry (Paraffin) Immunoprecipitation		
Application Notes:	For Immunohistochemistry (Paraffin), use a working dilution of 1:100-1:400. The optimal concentration should be determined by the user for each specific application.		
Storage & Stability:	Store lyophilized antibody at -80°C. Reconstituted antibody is stable for 6 months in working aliquots at -20°C to -80°C. Avoid repeated freeze-thaw cycles.		

PTPRC Immunohistochemistry staining of paraffin sections of mouse kidney and heart tissues from LPS exposed animals



NOT FOR HUMAN USE. FOR RESEARCH ONLY. NOT FOR DIAGNOSTIC OR THERAPEUTIC USE.



Cell Sciences®
480 Neponset Street
Bldg 12A
Canton, MA 02021

Toll Free: 888-769-1246
Phone: 781-828-0610
Fax: 781-828-0542

E-mail: info@cellsciences.com
Website: www.cellsciences.com