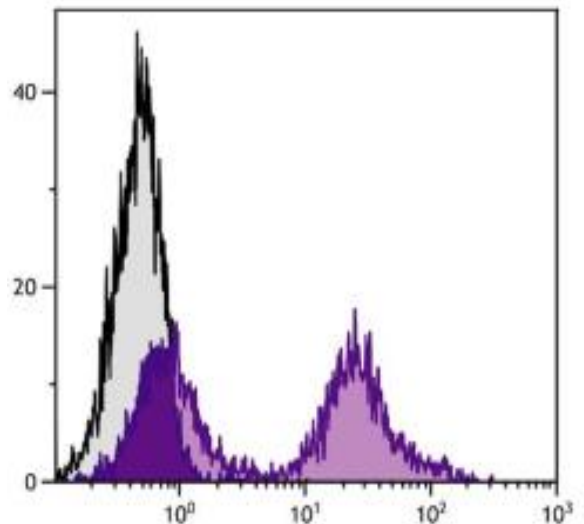
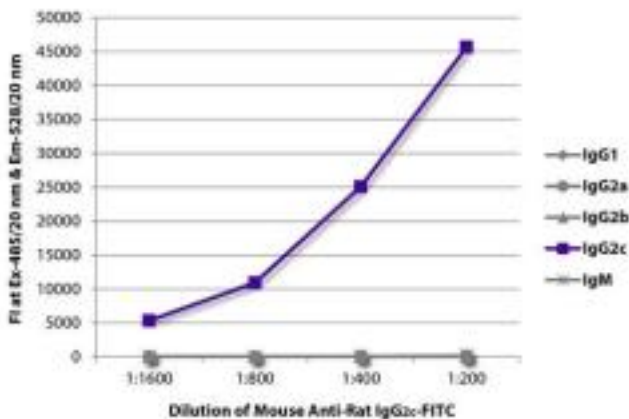


## Mouse Anti-Rat IgG<sub>2c</sub> Clone 2C8F1 FITC mAb

<b>Catalog No.</b>	CMR022	<b>Quantity:</b>	500 µg
<b>Description:</b>	Mouse Anti-Rat IgG <sub>2c</sub> Clone 2C8F1 FITC mAb		
<b>Concentration:</b>	500 µg/mL		
<b>Specificity:</b>	Rat IgG <sub>2c</sub>		
<b>Immunogen:</b>	Rat IgG <sub>2c</sub> hybridoma		
<b>Isotype:</b>	Mouse (BALB/c) IgG <sub>2a</sub> k		
<b>Clone:</b>	2C8F1		
<b>Conjugate:</b>	FITC (Fluorescein)		
<b>Formulation:</b>	Liquid volume of 1.0 mL in PBS/NaN <sub>3</sub>		
<b>Isotype Control</b>	Mouse IgG <sub>2a</sub> -FITC		
<b>Applications:</b>	Applications for relevant formats of this clone include FLISA, Flow Cytometry and Immunohistochemistry.		
<b>Application Notes:</b>	Working dilutions; FLISA 1:200 - 1:400, for Flow Cytometry ≤ 1 µg/10 <sup>6</sup> cells in suggested final volume of 100 µL. Since applications vary, you should determine the optimum working dilution for the product that is appropriate for your specific need.		
<b>Storage &amp; Stability:</b>	Store at 2-8°C. <b>DO NOT FREEZE</b>		

FLISA plate was coated with purified rat IgG1, IgG2a, IgG2b, IgG2c, and IgM. Immunoglobulins were detected with serially diluted Mouse Anti-Rat IgG2c-FITC

BALB/c mouse splenocytes were stained with Rat Anti-Mouse CD24 (Isotype - Rat IgG2c) followed by Mouse Anti-Rat IgG2c-FITC .



# cellsciences.com

NOT FOR HUMAN USE. FOR RESEARCH ONLY. NOT FOR DIAGNOSTIC OR THERAPEUTIC USE.



**Cell Sciences®**  
65 Parker Street  
Unit 11  
Newburyport, MA 01950

Toll Free: 888-769-1246  
Phone: 978-572-1070  
Fax: 978-992-0298

E-mail: [info@cellsciences.com](mailto:info@cellsciences.com)  
Website: [www.cellsciences.com](http://www.cellsciences.com)