

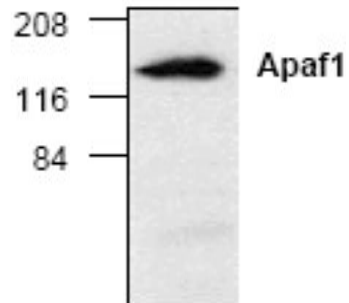
APAF1

Rabbit Anti-Human Apoptotic Peptidase Activating Factor 1 Affinity Purified pAb

Catalog No.	CPA103	Quantity:	100 µg
Alternate Names:	Apoptotic Protease Activating Factor 1, CED4, APAF-1		
Gene ID:	317		
Description:	Rabbit Anti-Human APAF1 Affinity Purified polyclonal antibody. During apoptosis, APAF1 binds to cytochrome c (APAF2), a reaction that requires dATP, and this leads to the formation of a large multimeric complex. The complex recruits pro-caspase 9, and activates caspase 9 (APAF3). Activated caspase 9 in turn cleaves and activates caspase 3, one of the proteases responsible for the proteolytic cleavage of many key proteins in apoptosis. APAF1 is ubiquitously expressed in human tissues.		
Concentration:	0.2 mg/ml		
Specificity:	Detects a 130 kDa protein corresponding to the apparent molecular weight of APAF1 on SDS-PAGE immunoblots.		
Host:	Rabbit		
Immunogen:	Synthetic peptide surrounding amino acid 1161 of human APAF1		
Formulation:	Liquid in PBS, pH 7.2 + 30% glycerol + 0.05% BSA + 0.01% thimerosal. Precaution: Thimerosal is a poisonous and hazardous substance which should be handled by trained staff only.		
Purification:	Biospecific affinity chromatography		
Cross-Reactivity:	Reacts with human, mouse, rat, cow, rabbit, hamster, guinea pig, and monkey.		
Applications:	Western Blot		
Application Notes:	For Western Blot, use a working dilution of 0.5-4 µg/ml. The optimal concentration should be determined by the user for each specific application.		
Storage & Stability:	Store at -20°C or in working aliquots at -80°C for long term storage. Avoid repeated freeze-thaw cycles.		



Western Blot analysis of APAF1 expression in human heart tissue lysate



NOT FOR HUMAN USE. FOR RESEARCH ONLY. NOT FOR DIAGNOSTIC OR THERAPEUTIC USE.