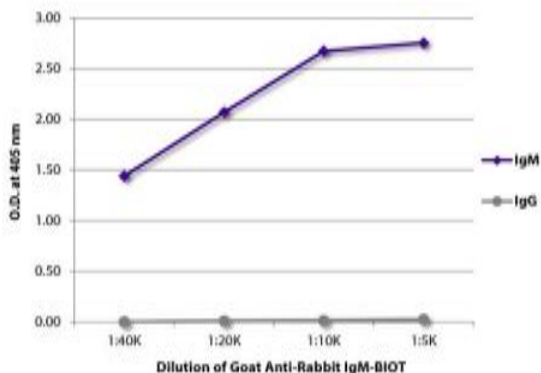


Goat Anti-Rabbit IgM-Biotin

Catalog No.	CPB013	Quantity:	1.0 mg
Description:	Goat Anti-Rabbit IgM-Biotin. Pooled antisera from goats hyperimmunized with rabbit IgM. Cross adsorbed on Rabbit IgG. Purified by affinity chromatography on rabbit IgM covalently linked to agarose.		
Concentration:	500 µg/mL		
Specificity:	Reacts with the heavy chain of rabbit IgM		
Isotype:	Goat IgG		
Conjugate:	Biotin		
Formulation:	Liquid volume of 2.0 mL in a buffer of PBS/NaN ₃		
Isotype Control:	Goat IgG-BIOT		
Cross-Reactivity:	May react with immunoglobulins from other species		
Applications:	ELISA, Flow Cytometry, ELISPOT, Immunohistochemistry, Western Blot.		
Application Notes:	Working dilution for ELISA 1:5,000 - 1:20,00. Since applications vary, you should determine the optimum working dilution for the product that is appropriate for your specific need.		
Storage & Stability:	Store at 2-8°C. □ For long term storage at -20°C, aliquot into smaller volumes to avoid multiple freeze/thaw cycles.		

ELISA plate was coated with purified rabbit IgM and IgG. Immunoglobulins were detected with serially diluted Goat Anti-Rabbit IgM-BIOT followed by Streptavidin-HRP (Cat. No. CPO016).



NOT FOR HUMAN USE. FOR RESEARCH ONLY. NOT FOR DIAGNOSTIC OR THERAPEUTIC USE.