

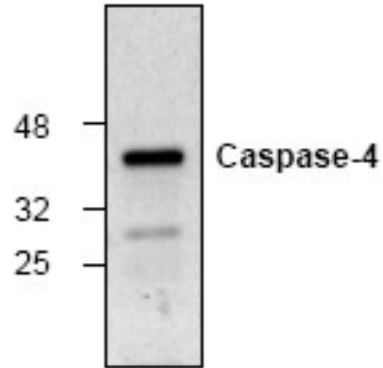
CASP4

Rabbit Anti-Human Caspase 4 Apoptosis-Related Cysteine Peptidase Affinity Purified pAb

Catalog No.	CPC112	Quantity:	100 µg
Alternate Names:	Caspase 4, ICE(rel)II, ICEREL-II, ICH-2, Mih1/TX, TX		
Gene ID:	837		
Description:	Rabbit Anti-Human Caspase 4 Affinity Purified polyclonal antibody. Apoptosis occurs during normal cellular development and involves dramatic changes in cellular structure. Disruption of apoptosis may contribute to cancer as well as other autoimmune diseases. Caspase family of cysteine proteases has been shown to play a key role in apoptosis. Caspase 4 can be proteolytically processed by granzyme B. Over expression of caspase 4 induces apoptosis in Rat-1 and HeLa cells, which can be inhibited by CrmA and BCL2.		
Concentration:	0.2 mg/ml		
Specificity:	Detects the 43 kDa proform of caspase 4.		
Host:	Rabbit		
Immunogen:	Synthetic peptide surrounding amino acid 100 of human caspase 4		
Formulation:	Liquid in PBS, pH 7.2 + 30% glycerol + 0.5% BSA + 0.01% thimerosal. Precaution: Thimerosal is a poisonous and hazardous substance which should be handled by trained staff only.		
Purification:	Biospecific affinity chromatography		
Cross-Reactivity:	Reacts with human, mouse, and rat.		
Applications:	Western Blot		
Application Notes:	For Western Blot, use a working dilution of 0.5-4 µg/ml. Mouse small intestine tissue lysate can be used as a positive control. Blocking Peptide (Cat. No. CPC112B) is available separately. The optimal concentration should be determined by the user for each specific application.		
Storage & Stability:	Store at -20°C or in working aliquots at -80°C for long term storage. Avoid repeated freeze-thaw cycles.		



Western blot analysis of Caspase 4 expression in HeLa cell extract.



NOT FOR HUMAN USE. FOR RESEARCH ONLY. NOT FOR DIAGNOSTIC OR THERAPEUTIC USE.



Cell Sciences[®]
480 Neponset Street
Bldg 12A
Canton, MA 02021

Toll Free: 888-769-1246
Phone: 781-828-0610
Fax: 781-828-0542

E-mail: info@cellsciences.com
Website: www.cellsciences.com