

## CASP7

### Rabbit Anti-Human Active Caspase 7 Apoptosis-Related Cysteine Peptidase Affinity Purified pAb

**Catalog No.** CPC116 **Quantity:** 100 µg

**Alternate Names:** Caspase 7, CMH-1, ICE-LAP3, MCH3

**Gene ID:** 840

**Description:** Rabbit Anti-Human Active Caspase 7 Affinity Purified polyclonal antibody. Caspase 7 is a major contributor to the execution of apoptosis. Caspase 7 is cleaved by many enzymes, including caspase 3, -6, -8, -9 and granzyme B. Active caspase 7 consists of a heterotetramer of two large and two small subunits. As an effector caspase, caspase 7 cleaves many of the same substrates as caspase 3, including poly (ADPribose) polymerase (PARP). The active caspase 7 antibody provides a new tool for identifying apoptotic cell populations in both tissue sections and cultured cells.

**Concentration:** 0.2 mg/ml

**Specificity:** Detects only the large subunit of cleaved human Caspase 7. Does not recognize full length of Caspase 7 or other caspases.

**Host:** Rabbit

**Immunogen:** Synthetic peptide surrounding amino acid 195 of human Caspase 7

**Formulation:** Liquid in PBS + 50% glycerol + 1% BSA + 0.02% thimerosal. Precaution: Thimerosal is a poisonous and hazardous substance which should be handled by trained staff only.

**Purification:** Biospecific affinity chromatography

**Cross-Reactivity:** Reacts with human, mouse, and rat.

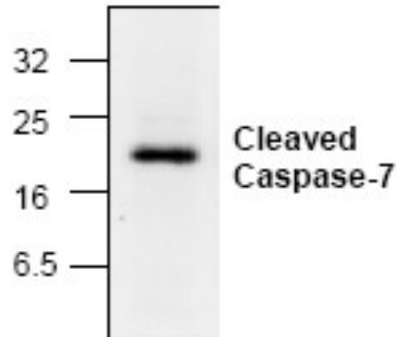
**Applications:** Western Blot  
Immunoprecipitation  
Immunohistochemistry

**Application Notes:** For Western Blot, use a working dilution of 0.5-4 µg/ml.  
For Immunoprecipitation, use a working dilution of 10-20 µg/ml.  
For Immunohistochemistry, use a working dilution of 10-20 µg/ml.  
The optimal concentration should be determined by the user for each specific application.



**Storage & Stability:** Store at -20°C or in working aliquots at -80°C for long term storage. **Avoid repeated freeze-thaw cycles.**

Western blot analysis of Jurkat cells induced with 2 mM of Camptothecin for 6 hours.



**NOT FOR HUMAN USE. FOR RESEARCH ONLY. NOT FOR DIAGNOSTIC OR THERAPEUTIC USE.**



**Cell Sciences**<sup>®</sup>  
480 Neponset Street  
Bldg 12A  
Canton, MA 02021

Toll Free: 888-769-1246  
Phone: 781-828-0610  
Fax: 781-828-0542

E-mail: [info@cellsciences.com](mailto:info@cellsciences.com)  
Website: [www.cellsciences.com](http://www.cellsciences.com)