

## Casp6

### Rabbit Anti-Rat Caspase 6 pAb

**Catalog No.** CPC118 **Quantity:** 100 µg

**Alternate Names:** Caspase 6, MCH2

**Gene ID:** 83584

**Protein Accession No:** AAC25433

**Description:** Rabbit Anti-Rat Caspase 6 polyclonal antibody. Caspase 6 is one of the major executioner caspases functioning in cellular apoptotic processes. Similar to other caspases, caspase 6 is also synthesized as an inactive proenzyme that is processed in cells undergoing apoptosis. Caspase 6 is also involved in the proteolysis of poly (ADP-ribose) polymerase (PARP) and nuclear lamin A.

**Concentration:** 0.2 mg/ml

**Specificity:** Detects a full length (35 kDa) and the cleaved fragment (18 kDa) of Caspase 6.

**Host:** Rabbit

**Immunogen:** Synthetic peptide mapping to the C-terminus of rat Caspase 6 large fragment

**Isotype:** IgG

**Formulation:** Liquid in PBS, pH 7.2 + 30% glycerol + 0.5% BSA + 0.01% thimerosal. Precaution: Thimerosal is a poisonous and hazardous substance which should be handled by trained staff only.

**Cross-Reactivity:** Reacts with human, mouse, and rat.

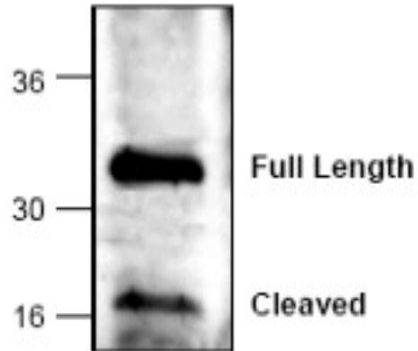
**Applications:** Western Blot

**Application Notes:** For Western Blot, use a working dilution of 0.5-4 µg/ml. Jurkat cell lysate, mouse intestine, and rat kidney tissue lysate can be used as positive control. Blocking Peptide is available separately (Cat. No. CPC118BP). The optimal concentration should be determined by the user for each specific application.



**Storage & Stability:** Store at -20°C or in working aliquots at -80°C for long term storage. **Avoid repeated freeze-thaw cycles.**

Western Blot analysis of Caspase 6 expression rat kidney tissue lysate. Both full length and the cleaved large fragment have been detected.



**NOT FOR HUMAN USE. FOR RESEARCH ONLY. NOT FOR DIAGNOSTIC OR THERAPEUTIC USE.**

