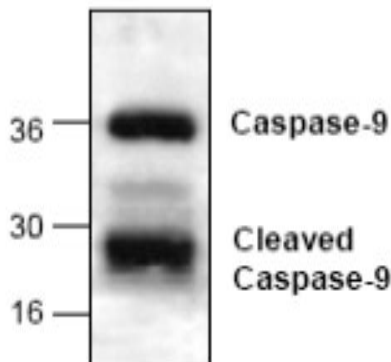


CASP9

Rabbit Anti-Human Caspase 9 Apoptosis-Related Cysteine Peptidase Affinity Purified pAb

Catalog No.	CPC122	Quantity:	100 µg
Alternate Names:	Caspase 9, APAF3, ICE-LAP6, MCH6		
Gene ID:	842		
Description:	Rabbit Anti-Human Caspase 9 Affinity Purified polyclonal antibody		
Concentration:	0.2 mg/ml		
Specificity:	Detects proform (~ 46 kDa), intermediate (~33-36 kDa), and the fully cleaved (~20-25 kDa) Caspase 9.		
Host:	Rabbit		
Immunogen:	Synthetic peptide surrounding amino acid 290 of human Caspase 9		
Formulation:	Liquid in PBS, pH 7.2 + 30% glycerol + 0.5% BSA + 0.01% thimerosal. Precaution: Thimerosal is a poisonous and hazardous substance which should be handled by trained staff only.		
Purification:	Biospecific affinity chromatography		
Cross-Reactivity:	Reacts with human, mouse, rat, hamster, rabbit, pig, and cow.		
Applications:	Western Blot		
Application Notes:	For Western Blot, use a working dilution of 0.5-4 µg/ml. Blocking Peptide (Cat. No. CPC122BP) is available separately. The optimal concentration should be determined by the user for each specific application.		
Storage & Stability:	Store at -20°C or in working aliquots at -80°C for long term storage. Avoid repeated freeze-thaw cycles.		

Western Blot analysis of Caspase 9 with rat kidney tissue lysate



NOT FOR HUMAN USE. FOR RESEARCH ONLY. NOT FOR DIAGNOSTIC OR THERAPEUTIC USE.

