

CASP9

Rabbit Anti-Human Active Caspase 9 Apoptosis-Related Cysteine Peptidase Affinity Purified pAb

Catalog No. CPC124 **Quantity:** 100 µg

Alternate Names: Caspase 9, APAF3, ICE-LAP6, MCH6

Gene ID: 842

Description: Rabbit Anti-Human Active Caspase 9 Affinity Purified polyclonal antibody. Caspases are synthesized as inactive pro-enzymes that are processed to active form in cells undergoing apoptosis. Caspase 9 is an important member of the caspase family. Upon induction of apoptosis, Cytochrome c released from mitochondria associates with procaspase 9 (47 kDa) and APAF1. The complex processes pro-caspase 9 into a large subunit (37 kDa/17 kDa) and a small subunit (10 kDa). Cleaved caspase 9 further processes other caspases including caspase 3 and caspase 6, to initiate a caspase cascade leading to apoptosis. The affinity purified antibody recognizing the active forms of caspase 9 provides a new tool for identifying apoptotic cell populations in both tissue sections and cultured cells.

Concentration: 0.2 mg/ml

Specificity: Recognizes only the cleaved human Caspase 9 (37 kDa). It does not recognize full length Caspase 9 or any other caspases.

Host: Rabbit

Immunogen: Synthetic peptide mapping to the N-terminus adjacent to Asp330 of human Caspase 9

Formulation: Liquid in PBS + 50% glycerol + 0.5% BSA + 0.02% thimerosal. Precaution: Thimerosal is a poisonous and hazardous substance which should be handled by trained staff only.

Purification: Biospecific affinity chromatography

Applications: Western Blot
Immunoprecipitation
Immunocytochemistry

Application Notes: For Western Blot, use a working dilution of 0.5-4 µg/ml.
For Immunoprecipitation, use a working dilution of 10-20 µg/ml.
For Immunocytochemistry, use a working dilution of 10-20 µg/ml.
The optimal concentration should be determined by the user for each specific application.



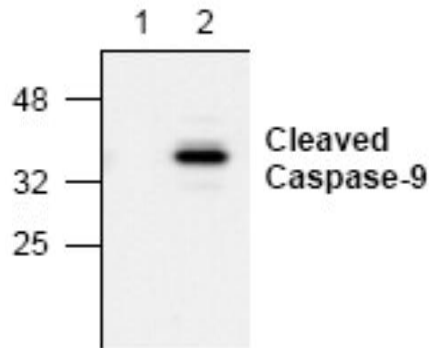
Storage & Stability:

Store at -20°C or in working aliquots at -80°C for long term storage. **Avoid repeated freeze-thaw cycles.**

Western Blot analysis with Jurkat cell lysate

Lane 1: Untreated

Lane 2: Etoposide treated



NOT FOR HUMAN USE. FOR RESEARCH ONLY. NOT FOR DIAGNOSTIC OR THERAPEUTIC USE.



Cell Sciences[®]
480 Neponset Street
Bldg 12A
Canton, MA 02021

Toll Free: 888-769-1246
Phone: 781-828-0610
Fax: 781-828-0542

E-mail: info@cellsciences.com
Website: www.cellsciences.com