

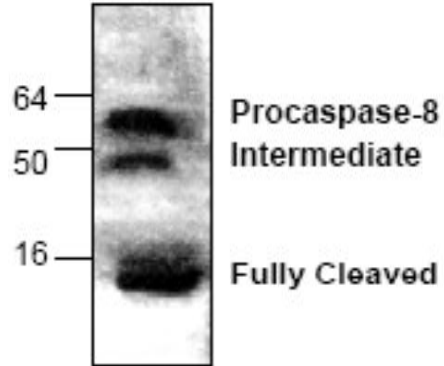
CASP8

Rabbit Anti-Mouse Caspase 8 Apoptosis-Related Cysteine Peptidase pAb

Catalog No.	CPC129	Quantity:	100 µg
Alternate Names:	Caspase 8, ALPS2B, CAP4, FLICE, MACH, MCH5		
Gene ID:	12370		
Description:	Rabbit Anti-Mouse Caspase 8 polyclonal antibody. The caspase family of cysteine proteases has been shown to play a key role in apoptosis. Caspase 8 is a 55 kDa cytosolic protein that is synthesized as an inactive pro-enzyme. Activation of caspase 8 involves a two-step proteolysis: the cleavage of caspase 8 to generate a 43 and a 12 kDa fragment which is further processed to 10 kDa. The p43 is then cleaved to yield p26 and the release of the active site containing p18.		
Concentration:	0.2 mg/ml		
Specificity:	Detects the full length (55 kDa), intermediate cleavage fragments (26-31 kDa), and cleaved large fragment (18 kDa) of Caspase 8.		
Host:	Rabbit		
Immunogen:	Synthetic peptide surrounding amino acid 392 of mouse Caspase 8		
Formulation:	Liquid in PBS, pH 7.2 + 30% glycerol + 0.5% BSA + 0.01% thimerosal. Precaution: Thimerosal is a poisonous and hazardous substance which should be handled by trained staff only.		
Purification:	Protein A purified		
Cross-Reactivity:	Reacts with human, mouse, rat, cow, and monkey.		
Applications:	Western Blot		
Application Notes:	For Western Blot, use a working dilution of 0.5-4 µg/ml. Blocking Peptide (Cat. No. CPC129BP) is available separately. The optimal concentration should be determined by the user for each specific application.		
Storage & Stability:	Store at -20°C or in working aliquots at -80°C for long term storage. Avoid repeated freeze-thaw cycles.		



Western Blot analysis of Caspase 8 in Jurkat cell treated by camptothecin



NOT FOR HUMAN USE. FOR RESEARCH ONLY. NOT FOR DIAGNOSTIC OR THERAPEUTIC USE.



Cell Sciences[®]
480 Neponset Street
Bldg 12A
Canton, MA 02021

Toll Free: 888-769-1246
Phone: 781-828-0610
Fax: 781-828-0542

E-mail: info@cellsciences.com
Website: www.cellsciences.com