

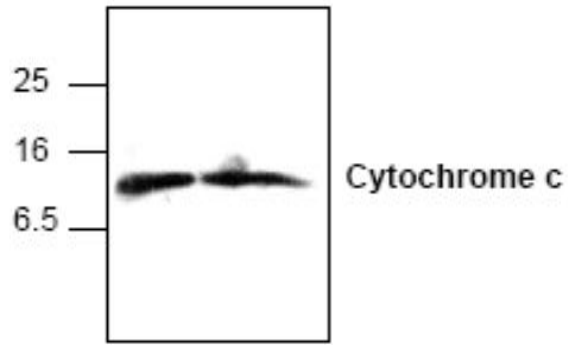
Cycc

Rabbit Anti-Rat Cytochrome C Affinity Purified pAb

Catalog No.	CPC131	Quantity:	100 µg
Alternate Names:	Cytochrome c, CYC, CYCSA		
Description:	Cytochrome c (m.w. 12,500) is an electron transport protein from mitochondria. It is released from mitochondria to cytoplasm during the early stages of apoptosis, prior to caspase activation, DNA fragmentation, and loss of membrane potential. The cytoplasmic cytochrome c is associated with Apaf-1 and caspase-9 to activate caspase-3 and other caspases.		
Concentration:	0.2 mg/ml		
Gene ID:	25309		
Host:	Rabbit		
Immunogen:	Synthetic peptide corresponding to residues surrounding amino acid 70 of rat cytochrome c		
Formulation:	Liquid in PBS, pH 7.2 + 30% glycerol + 0.5% BSA + 0.01% thimerosal. Precaution: Thimerosal is a poisonous and hazardous substance which should be handled by trained staff only.		
Isotype:	IgG		
Purification:	Biospecific affinity chromatography		
Specificity:	Detects the 12.6 kDa cytochrome c from human, mouse and rat samples. Jurkat cell lysate, NIH3T3 cell lysate, and rat kidney tissue lysate can be used as positive controls.		
Cross-Reactivity:	Human, Mouse, Rat, Bovine, Chick, Dog, Fruit fly, Horse, Kangaroo, Monkey, Pig, Pigeon, Rabbit, Sheep, Snail, Tuna, Turkey, Yeast (<i>S. cerevisiae</i>), Zebrafish		
Applications:	Western Blot Immunoprecipitation		
Application Notes:	For Western Blot, use a working dilution of 0.5-4 µg/ml. For Immunoprecipitation, use a working dilution of 10-20 µg/ml. Blocking Peptide (Cat. # CPC131BP) is available separately. The optimal concentration should be determined by the user for each specific application.		
Storage & Stability:	Store at -20°C or in working aliquots at -80°C for long term storage. Avoid repeated freeze-thaw cycles.		

Western Blot analysis of cytochrome c in Jurkat (left lane) and 3T3 (right lane) cell lysates





NOT FOR HUMAN USE. FOR RESEARCH ONLY. NOT FOR DIAGNOSTIC OR THERAPEUTIC USE.

