

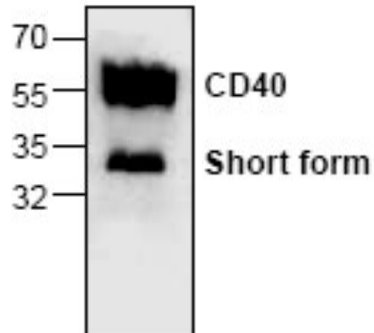
CD40

Rabbit Anti-Human CD40 Affinity Purified pAb

Catalog No.	CPC132	Quantity:	100 µg
Alternate Names:	CDW40, CDw40, p50, Bp50, MGC9013, TNFRSF5		
Description:	Rabbit Anti-Human CD40 Affinity Purified polyclonal antibody. CD40 is a type I membrane protein found on the surface of B cells and primary carcinomas. It belongs to the TNF-R family. CD40 serves as the receptor for CD40 ligand (CD40L), a cytokine expressed on the cell surface of T cells. CD40 plays a critical role in B cell proliferation, antibody class switching, modulation of apoptosis in the germinal center through interaction with T cells expressing CD40L, and activation of CD4+ T cells. In non-hemopoietic cells such as epidermal basal cells, CD40 ligation serves as the signal for inhibition of cell growth and induction of differentiation. The cytoplasmic domain of CD40 interacts with TRAF6, a TNFR associated factor homolog that mediates signaling from CD40. Ligation of CD40 with its ligand preferentially induces stress-activated protein kinases in B lymphocytes.		
Concentration:	0.2 mg/ml		
Gene ID:	958		
Specificity:	Human CD40		
Host:	Rabbit		
Immunogen:	Synthetic peptide corresponding to residues surrounding amino acids 261 of human CD40		
Isotype:	IgG		
Formulation:	Liquid in PBS + pH 7.2 + 30% glycerol + 0.5% BSA + 0.01% thimerosal. Precaution: Thimerosal is a poisonous and hazardous substance which should be handled by trained staff only.		
Purification:	Biospecific affinity chromatography		
Reconstitution:	The antibody solution should be gently mixed before use		
Cross-Reactivity:	Human, mouse, rat, monkey, pig, horse, and dog		
Applications:	Western Blot		
Application Notes:	For Western Blot, use a working dilution of 0.5-4 µg/ml. Blocking Peptide (Cat. No. CPC132BP) is available separately. The optimal concentration should be determined by the user for each specific application.		
Storage & Stability:	Store at -20°C or in working aliquots at -80°C for long term storage. Avoid repeated freeze-thaw cycles.		



Western Blot analysis of CD40 expression in rat kidney tissue lysate



NOT FOR HUMAN USE. FOR RESEARCH ONLY. NOT FOR DIAGNOSTIC OR THERAPEUTIC USE.



Cell Sciences®
480 Neponset Street
Bldg 12A
Canton, MA 02021

Toll Free: 888-769-1246
Phone: 781-828-0610
Fax: 781-828-0542

E-mail: info@cellsciences.com
Website: www.cellsciences.com