

## CDC42

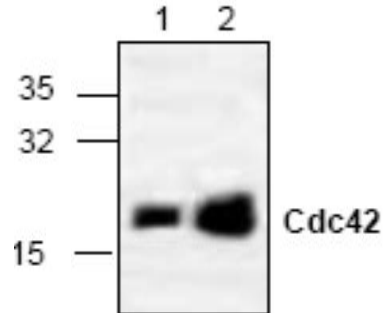
### Rabbit Anti-Human CDC42 Affinity Purified pAb

<b>Catalog No.</b>	CPC135	<b>Quantity:</b>	100 µg
<b>Alternate Names:</b>	CDC42Hs, G25K, GTP-binding protein, 25kD.		
<b>Description:</b>	Rabbit Anti-Human CDC42 Affinity Purified polyclonal antibody. CDC42 belongs to the superfamily of small GTPases that are structurally linked to the proto-oncogene product p21ras and are important for the control of cell growth and differentiation as well as for intracellular organization. CDC42 is an important upstream regulator of the protein kinase cascade that controls the SAPK/JNK and p38 activity. Recent data also suggest that constitutive active forms of CDC42 can induce apoptosis through a mechanism requiring signaling through SAPK/JNK.		
<b>Concentration:</b>	0.2 mg/ml		
<b>Gene ID:</b>	998		
<b>Specificity:</b>	Human CDC42		
<b>Host:</b>	Rabbit		
<b>Immunogen:</b>	Synthetic peptides surrounding amino acid 144 of human CDC42		
<b>Isotype:</b>	IgG		
<b>Formulation:</b>	Liquid in PBS + pH 7.2 + 30% glycerol + 0.5% BSA + 0.01% thimerosal. <b>Precaution:</b> Thimerosal is a poisonous and hazardous substance which should be handled by trained staff only.		
<b>Purification:</b>	Affinity purified.		
<b>Reconstitution:</b>	The antibody solution should be gently mixed before use. The optimal concentration should be determined by the user for each specific application.		
<b>Cross-Reactivity:</b>	Human, mouse, rat, and bovine		
<b>Applications:</b>	Western Blot Immunohistochemistry		
<b>Application Notes:</b>	For Western Blot, use a working dilution of 0.5-4 µg/ml. For Immunohistochemistry, use a working dilution of 10-20 µg/ml. The optimal concentration should be determined by the user for each specific application.		
<b>Storage &amp; Stability:</b>			



Store at -20°C or in working aliquots at -80°C for long term storage. **Avoid repeated freeze-thaw cycles.**

Western Blot analysis of CDC42 in mouse b3t3 tissue lysate (Lane 1) and in Jurkat cell lysate (Lane 2)



**NOT FOR HUMAN USE. FOR RESEARCH ONLY. NOT FOR DIAGNOSTIC OR THERAPEUTIC USE.**

