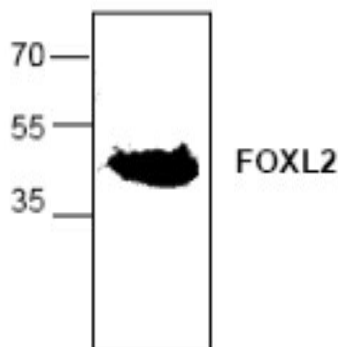


FOXL2

Rabbit Anti-Human Forkhead Box L2 Affinity Purified pAb

| | | | |
|---------------------------------|--|------------------|--------|
| Catalog No. | CPF114 | Quantity: | 100 µg |
| Alternate Names: | BPES, BPES1, PFRK, PINTO, POF3 | | |
| Gene ID: | 668 | | |
| Description: | Rabbit Anti-Human FOXL2 Affinity Purified polyclonal antibody. FOXL2 is a nuclear protein specially expressed in eyelids and in fetal and adult ovarian follicular cells. Defects in FOXL2 are cause of blepharophimosis, ptosis and epicanthus inversus syndrome (BPES). It is an autosomal dominant disorder characterized by eyelid dysplasia, small palpebral fissures, drooping eyelids and a skin fold. It is also associated with female infertility. | | |
| Concentration: | 0.5 mg/ml | | |
| Specificity: | Recognizes the FOXL2 of human, mouse, and rat origins. | | |
| Host: | Rabbit | | |
| Immunogen: | Synthetic peptide surrounding amino acid 367 of human FOXL2 | | |
| Formulation: | Liquid in PBS + 30% glycerol + 0.5% BSA + 0.01% thimerosal. Precaution: Thimerosal is a poisonous and hazardous substance which should be handled by trained staff only. | | |
| Purification: | Biospecific affinity chromatography | | |
| Applications: | Western Blot | | |
| Application Notes: | For Western Blot, use a working dilution of 0.5-4 µg/ml. Rat kidney tissue lysate can be used as a positive control. Blocking Peptide (Cat. No. CPF114BP) is available separately. The optimal concentration should be determined by the user for each specific application. | | |
| Storage & Stability: | Store at -20°C or in working aliquots at -80°C for long term storage. Avoid repeated freeze-thaw cycles. | | |

Western Blot analysis of FOXL2 expression in rat kidney tissue lysate.



NOT FOR HUMAN USE. FOR RESEARCH ONLY. NOT FOR DIAGNOSTIC OR THERAPEUTIC USE.

