

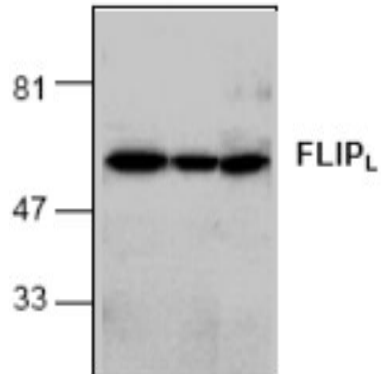
CFLAE

Rabbit Anti-Human FLIP Affinity Purified pAb

Catalog No.	CPF124	Quantity:	100 µg
Alternate Names:	CFLAR , I-FLICE, CASP8AP1, Casper, Usurpin, c-FLIPS , FLAME , CASH , c-FLIPL, CLARP, c-FLIPR, c-FLIP , MRIT , FLAME1		
Description:	c-FLIP was cloned by several labs independently and termed Casper, I-FLICE, FLAME -1, CASH AND CLARP. c-FLIP contains two death effector domains and has sequence homology to caspase-8. c-FLIP interacts with adapter protein FADD and caspase-8 and -10, and potently inhibits apoptosis induced by all known death receptors. Two splice variants of c-FLIP have been identified and termed FLIPI and FLIPs		
Concentration:	0.2 mg/ml		
Gene ID:	8837		
Specificity:	Detects 58 kDa FLIP _L on SDS-PAGE immunoblots. Recognizes only the FLIP _L form.		
Host:	Rabbit		
Immunogen:	Synthetic peptide near the C-terminus of human FLIP-alpha/FLIP _L form.		
Isotype:	IgG		
Formulation:	100 µg (0.2 mg/ml) affinity purified rabbit anti-FLIP polyclonal antibody in phosphate buffered saline (PBS), pH 7.2, containing 30% glycerol + 0.5% BSA + 0.01% thiomersal. Precaution: Thiomersal is a poisonous and hazardous substance which should be handled by trained staff only.		
Purification:	Biospecific affinity chromatography		
Cross-Reactivity:	Human, mouse, and rat		
Applications:	Western Blot Immunofluorescence		
Application Notes:	Western blot analysis (0.5-4 µg/ml) and immunofluorescence. However, the optimal conditions should be determined individually. The immunoaffinity-purified antibody detects 58 kDa FLIPL on SDS-PAGE immunoblots, in samples from human, mouse and rat origins. The antibody recognizes only the FLIPL form.		
Storage & Stability:	Store at -20°C or in working aliquots at -80°C for long term storage. Avoid repeated freeze-thaw cycles.		

Western Blot analysis of FLIP in HeLa (left), Jurkat (middle) and K562 (right) cell lysates





NOT FOR HUMAN USE. FOR RESEARCH ONLY. NOT FOR DIAGNOSTIC OR THERAPEUTIC USE.

